



**National Institutes of Health**  
*Turning Discovery Into Health*

## **Workshop on Inclusive Participation in Clinical Research**

### **Speaker Biographies**





## Lucile Adams-Campbell, Ph.D.

Dr. Lucile Adams-Campbell is the Associate Director for Minority Health and Health Disparities Research, a Senior Associate Dean for Community Outreach and Engagement, and a Professor of Oncology at Lombardi Comprehensive Cancer Center at Georgetown University Medical Center. She earned a Bachelor of Science in biology and a Master of Science in biomedical science from Drexel University in Philadelphia and a Ph.D. in epidemiology from the Graduate School of Public Health at the University of Pittsburgh. As a cancer epidemiologist, Dr. Adams-Campbell has received numerous awards and honors for her decades of research and contributions to the area of health disparities, including the election to the National Academy of Medicine, induction into the D.C. Hall of Fame and, more recently, the Joseph F. Fraumeni, Jr.

Distinguished Achievement Award from the American Society of Preventive Oncology. She was recognized as a 2021 Fellow at the American Association for Cancer Research Academy. Dr. Adams-Campbell also serves as Chair of the Alliance Health Disparities Committee. Dr. Adams-Campbell has been involved in large epidemiological cohort studies, including the Women's Health Initiative (for over two decades) and continues to serve as the site principal investigator/co-investigator of the Black Women's Health Study. She is also the principal investigator of the National Capital Area Minority/Underserved National Cancer Institute Community Oncology Research Program and the Howard-Georgetown Collaborative Partnership in Cancer Research. Her research focuses on addressing health disparities—with emphasis on clinical trials and cancers that disproportionately impact minority and underserved populations, particularly African-Americans—in the areas of obesity, metabolic syndrome, and energy balance. She has more than 240 peer reviewed publications.



## Jennifer Alvidrez, Ph.D.

Dr. Jennifer Alvidrez (she/her) is a Health Scientist Administrator in the NIH Office of Disease Prevention (ODP). She joined the ODP in August 2021. Dr. Alvidrez leads ODP efforts to strengthen research to address health disparities in disease prevention. Before joining ODP, Dr. Alvidrez was a Program Official at the National Institute on Minority Health and Health Disparities (NIMHD). In this role, she managed a diverse portfolio of research, capacity building, and training grants. Dr. Alvidrez also served as the Program Director for the NIMHD Centers of Excellence Program and initiatives on population health in the U.S.-Affiliated Pacific Islands, on risk and resilience in Puerto Rico and U.S. Virgin Islands after Hurricanes Irma and Maria, and on youth violence preventive interventions that address racism/discrimination. Prior to the NIMHD, Dr. Alvidrez was an Associate Professor in the Department of Psychiatry at the University of California, San

Francisco. Her research addressed barriers to mental health care among racial and ethnic minority populations, mental health stigma, mental health treatment for crime victims, and minority inclusion in clinical research. Dr. Alvidrez received a Ph.D. in clinical psychology from the University of California, Berkeley.







## RDML Richardae Araojo, Pharm.D., M.S.

Rear Admiral Richardae Araojo is the Associate Commissioner for Minority Health and Director of the Office of Minority Health and Health Equity at the U.S. Food and Drug Administration (FDA). In this role, RDML Araojo provides leadership, oversight, and direction on minority health and health disparity matters for the agency. RDML Araojo previously served as the Director of the Office of Medical Policy Initiatives in FDA's Center for Drug Evaluation and Research (CDER), where she led a variety of broad-based medical and clinical policy initiatives to improve the science and efficiency of clinical trials and enhance professional and patient labeling. RDML Araojo joined FDA in 2003, where she held several positions in CDER. RDML Araojo earned a Doctor of Pharmacy from Virginia Commonwealth University, completed a pharmacy practice residency at University of

Maryland, and earned a Master of Science in pharmacy regulation and policy from the University of Florida.

---



## Sonia Arteaga, Ph.D.

Dr. Sonia Arteaga is a Supervisory Health Scientist Administrator in the Environmental influences on Child Health Outcomes (ECHO) Program in the Office of the Director at the National Institutes of Health (NIH). She joined the ECHO Program in 2019 and leads the team of program officers that oversee the ECHO Program, and she also leads ECHO's diversity efforts. The mission of ECHO is to enhance the health of children for generations to come. Since its inception in 2016, the ECHO Cohort has woven together data from 69 existing and ongoing longitudinal maternal-child studies into a single large consortium –the ECHO Cohort, which consists of a diverse

population of over 50,000 children plus their family members from 33 states, Washington D.C., and Puerto Rico. Prior to joining ECHO, Dr. Arteaga was a Program Director at the National Heart, Lung, and Blood Institute where she led several research initiatives, targeting health disparities and obesity in children and pregnant participants. Dr. Arteaga is a member of the senior leadership group of the NIH Obesity Research Task Force and provides leadership on the development and coordination of obesity research efforts across the NIH. She is also a member of the National Collaborative on Childhood Obesity Research and works with other federal agencies to further childhood obesity research. Dr. Arteaga is also active in NIH efforts to develop a strategic plan addressing diversity, equity, inclusivity, and accessibility. Dr. Arteaga received her Ph.D. in psychology from the University of Maryland Baltimore County.





## Marie Bernard, M.D.

Dr. Marie A. Bernard is the NIH Chief Officer for Scientific Workforce Diversity (COSWD). As COSWD, she leads NIH thought regarding the science of scientific workforce diversity, assuring that the full range of talent is accessed to promote scientific creativity and innovation, both intramurally and extramurally. Dr. Bernard also co-leads NIH's UNITE initiative to end structural racism. Prior to being selected as the COSWD in May 2021, she was Deputy Director of the National Institute on Aging (NIA). As NIA's senior geriatrician, she served as the principal advisor to the NIA Director. She also led a broad range of activities, including co-chairing two Department of Health and Human Services Healthy People 2020/2030 objectives – 1) older adults, and 2) dementias (including Alzheimer's disease). She co-lead the NIH-wide Inclusion Governance Committee that ensures appropriate inclusion of individuals in clinical studies, including by sex/gender, race/ethnicity, and inclusion of children and older adults. She also led the Women of Color Committee of the NIH Working Group on Women in Biomedical Careers. Her national leadership in geriatrics research, teaching, and clinical practice

have been recognized by the Clark Tibbitts Award from the Academy for Gerontology in Higher Education (2013), and the Donald P. Kent Award from the Gerontological Society of America (2014). Her work within NIH has been recognized with NIH Director's awards (2018 and 2019), including the NIH Director's Award for Equity, Diversity, and Inclusion in 2020.



## Kirsten Bibbins-Domingo, Ph.D., M.D., M.A.S.

Dr. Kirsten Bibbins-Domingo is the 17<sup>th</sup> Editor-in-Chief of the Journal for the American Medical Association. She is the Lee Goldman, M.D. Professor of Medicine and a Professor of Epidemiology and Biostatistics at the University of California, San Francisco (UCSF). She previously served as the Chair of the Department of Epidemiology and Biostatistics and as the inaugural Vice Dean for Population Health and Health Equity in the UCSF School of Medicine. She co-founded the UCSF Center for Vulnerable Populations at Zuckerberg San Francisco General Hospital, which focuses on actionable research to improve health equity and reduce health disparities. Dr. Bibbins-Domingo is a general internist and cardiovascular epidemiologist, whose scholarship includes observational epidemiology, pragmatic trials, and simulation modeling to examine clinical and public health approaches to prevention in the U.S. and globally. She previously served on and led the U.S. Preventive Services Task Force from 2010-2017. She has received numerous honors, including induction into the American Society for Clinical Investigation, the National Academy of Medicine, and the American Academy of Arts and Sciences.





## Bernadette Boden-Albala, Ph.D.

Dr. Bernadette Boden-Albala is the Director and Founding Dean of the University of California, Irvine's (UCI) future School of Population and Public Health. In a short span, the program has gone from one department to four departments under Boden-Albala's leadership. A renowned researcher and academic administrator, she holds several leadership roles within the public health field, at the UCI campus, and at the UC-system level. For the past 25 years, Boden-Albala has dedicated her career to promoting health equity for all, defining and intervening on social determinants of disease, and leading community-level health assessments and solutions. She also has expertise in cardiovascular disease and stroke, emerging infectious diseases, epidemiology, as well as global health. In addition to being a Professor in the Departments of Health, Society, and Behavior and Epidemiology and Biostatistics at UCI Public Health, Boden-Albala also holds an appointment at the UCI School of Medicine as a Professor of Neurology. She is a lead investigator on the National Initiative for

Minority Involvement in Neurological Clinical Trials, which has resulted in improving racial-ethnic minorities and women's participation rates in clinical trials. She has also worked with UNICEF and the United Nations World Food Program where she worked on Ebola virus and polio response solutions and explored a systems approach to food access. Since the start of the COVID-19 pandemic, Boden-Albala has been at the forefront of Orange County's COVID-19 response and has held leadership advisory positions at the Orange County Health Care Agency and at UCI, having started the successful contact tracing program.



## Otis W. Brawley, M.D.

Dr. Otis W. Brawley is the Bloomberg Distinguished Professor of Oncology and Epidemiology at Johns Hopkins University. He is an authority on cancer screening and prevention and leads a broad interdisciplinary research effort focused on cancer health disparities at the Johns Hopkins School of Medicine, the Bloomberg School of Public Health, and the Sidney Kimmel Comprehensive Cancer Center. Dr. Brawley is a Fellow of the Royal College of Physicians (London), a Fellow of the American Society of Clinical Oncology, a Fellow of the American College of Epidemiology and one of the few physicians to be named a Master of the American College of Physicians. He is an elected member of the National Academy of Medicine. Dr. Brawley is a graduate of University of Chicago Pritzker School of Medicine. He completed an internal medicine residency at Case-Western Reserve University and a fellowship in medical oncology at the National Cancer Institute. He is board certified in internal medicine and medical oncology.







### Billy Caceres, Ph.D., R.N.

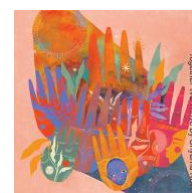
Dr. Billy A. Caceres (he/him) is an Assistant Professor in the Center for Sexual and Gender Minority Health Research at Columbia University School of Nursing. His program of research examines social determinants of cardiovascular health among sexual and gender minority populations across the lifespan. His NIH-funded career development award investigates risk and protective factors for cardiovascular disease among sexual minority women and their heterosexual sisters. In 2020, Dr. Caceres was the recipient of the NIH's Sexual and Gender Minority Early-Stage Investigator Award.



### Robert Califf, M.D.

Dr. Robert M. Califf is the 25<sup>th</sup> Commissioner of Food and Drugs at the U.S. Food and Drug Administration (FDA). As Commissioner, Dr. Califf oversees the full breadth of the FDA portfolio and execution of the Federal Food, Drug, and Cosmetic Act and other applicable laws. This includes assuring the safety, effectiveness, and security of human and veterinary drugs, vaccines and other biological products for human use, and medical devices; the safety and security of our nation's food supply, cosmetics, dietary supplements, products that give off electronic radiation; and the regulation of tobacco products. Dr. Califf has had a long and distinguished career as a physician, researcher, and leader in the fields of science and medicine. He is a nationally recognized expert in cardiovascular medicine, health outcomes

research, health care quality, and clinical research, and a leader in the growing field of translational research, which is key to ensuring that advances in science translate into medical care. This is Dr. Califf's second stint as Commissioner, having also served as 22<sup>nd</sup> Commissioner in 2016. Before assuming the position at that time, he served as the FDA's Deputy Commissioner for Medical Products and Tobacco. Prior to rejoining the FDA in 2022, Dr. Califf was head of medical strategy and senior advisor at Alphabet Inc., contributing to strategy and policy for its health subsidiaries Verily Life Sciences and Google Health. He joined Alphabet in 2019, after serving as a Professor of Medicine and Vice Chancellor for Clinical and Translational Research at Duke University. He also served as Director of the Duke Translational Medicine Institute and was the Founding Director of the Duke Clinical Research Institute. Dr. Califf is a graduate of Duke University School of Medicine. He completed a residency in internal medicine at the University of California, San Francisco and a fellowship in cardiology at Duke.





## Shonta Chambers, M.S.W.

Shonta Chambers is the Executive Vice President for Health Equity Initiatives and Community Engagement at the Patient Advocacy Foundation (PAF). She is a seasoned non-profit executive and public health professional with over 25 years of experience in chronic disease prevention, health promotion, community engagement and women's health. She is responsible for the development and execution of the foundation's national strategy to address health equity, with a specific focus on persons with chronic and complex health conditions residing in low-income communities with high disease morbidity and premature mortality. This includes establishing benchmarks to measure progress. Shonta drives program initiatives that respond to unaddressed social determinants of health and the

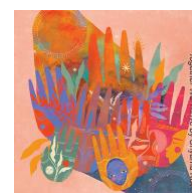
social need gaps caused by them. As the staff lead for PAF's health equity work promoting person-centered care, she engages strategically with community stakeholders aligning with all facets where people seek assistance, to mitigate barriers to health care. Shonta also serves as the principal investigator for the SelfMade Health Network, one of eight national networks supported by CDC-RFA-DP18-1808: Networking2Save, CDC's National Network Approach to Preventing and Controlling Tobacco-Related Cancers in Special Populations. She provides leadership in the implementation and evaluation of evidence-based strategies to advance the prevention of commercial tobacco use and promote early detection of cancer among populations with low socioeconomic characteristics, with the overall goal of decreasing related disparities.



## Luther T. Clark, M.D., FACC, FACP

Dr. Luther T. Clark is Executive Director, Patient Innovation and Engagement, Global Medical and Scientific Affairs at Merck. In this role, he is responsible for (1) collaborating with key internal and external stakeholders to increase the voice of patients, directly and indirectly, in decision-making; (2) supporting implementation of the global clinical trial diversity, inclusion and equity strategic plan; and (3) representing Merck externally, expanding bi-directional exchange and connectivity with key patient and professional leaders and organizations. Dr. Clark co-leads a team that champions diversity, equity and inclusion in clinical research and chairs Merck's Patient Engagement, Diversity and Health Literacy Investigator Initiated Studies Research Committee. Prior to joining Merck, Dr. Clark was Chief of the Division of Cardiovascular Medicine at the State University

of New York Downstate Medical Center (SUNY Downstate) and Founding Director of the NIH-funded Brooklyn Health Disparities Research Center. Dr. Clark earned his Bachelor of Arts from Harvard College and his medical degree from Harvard Medical School. He is a Fellow of the American College of Cardiology and the American College of Physicians. He is a nationally and internationally recognized leader in cardiovascular education, clinical investigation, cardiovascular disease prevention, and health equity. He has authored more than 100 publications and edited (as well as being principal contributor to) the textbook, *Cardiovascular Disease and Diabetes* (McGraw-Hill). Dr. Clark has received numerous awards and honors, including the Harvard University Alumni Lifetime Achievement Award for Excellence in Medicine.





## Janine A. Clayton, M.D., FARVO

Dr. Janine A. Clayton is Associate Director for Research on Women's Health and Director of the NIH Office of Research on Women's Health (ORWH). She is the architect of the NIH policy requiring scientists to consider sex as a biological variable across the research spectrum. This policy is part of NIH's initiative to enhance reproducibility through rigor and transparency. As Co-Chair of the NIH Working Group on Women in Biomedical Careers with the NIH Director, Dr. Clayton also leads NIH's efforts to advance women in science careers. In 2021, Dr. Clayton was elected to the Board of Directors of the American Association for the Advancement of Science. Prior to joining the ORWH, Dr. Clayton was the Deputy Clinical Director of the National Eye Institute (NEI) for seven years. A board-certified ophthalmologist, Dr. Clayton's research interests include

autoimmune ocular diseases and the role of sex and gender in health and disease. She is the author of more than 120 scientific publications, journal articles, and book chapters. Dr. Clayton, a native Washingtonian, received her undergraduate degree with honors from Johns Hopkins University and her medical degree from Howard University College of Medicine. She completed a residency in ophthalmology at the Medical College of Virginia. Dr. Clayton completed fellowship training in cornea and external disease at the Wilmer Eye Institute at Johns Hopkins Hospital and in uveitis and ocular immunology at NEI. Dr. Clayton has received numerous awards, including the Senior Achievement Award from the Board of Trustees of the American Academy of Ophthalmology in 2008 and the European Uveitis Patient Interest Association Clinical Uveitis Research Award in 2010.



## Nakela L. Cook, M.D., M.P.H.

Dr. Nakela L. Cook is the Executive Director at the Patient-Centered Outcomes Research Institute (PCORI). She is a cardiologist and health services researcher with a distinguished career leading key scientific initiatives engaging patients, clinicians, and other health care stakeholders at some of the nation's largest health research funders. Dr. Cook leads PCORI's research, dissemination and implementation, and engagement work as the organization enters its second decade of service to the nation. She also provides oversight to a growing number of ongoing programs and new initiatives designed to create a more efficient, effective, equitable, and patient-centered system of health. Under her leadership and with extensive engagement of stakeholders, PCORI established a bold vision in its strategic plan that builds on its past work to address the challenges facing

a complex, fast-changing health care system. Prior to her current role, Dr. Cook served as Senior Scientific Officer and Chief of Staff at the National Heart, Lung, and Blood Institute (NHLBI), the third largest institute of the National Institutes of Health, with a staff of 1,000 and an annual budget of over \$3 billion. She spearheaded the development and implementation of NHLBI's strategic plan and initiatives in precision medicine, data science, sickle cell disease, and women's health.







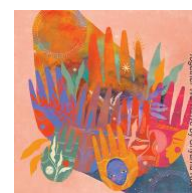
### Dawn Corbett, M.P.H.

Dawn Corbett (she/her) is the Inclusion Policy Officer in the NIH Office of Extramural Research (OER), where she provides oversight of trans-NIH efforts to ensure the inclusion of women, minorities, and individuals across the lifespan in NIH-defined clinical research. Prior to joining OER, Ms. Corbett led efforts to increase the efficiency and transparency of clinical research through enhanced recruitment monitoring and increased compliance efforts as a Health Science Policy Analyst in the National Institute of Mental Health (NIMH) Office of Clinical Research, in the Clinical Trials Operations and Biostatistics Branch. Ms. Corbett began her federal career at NIH in the NIMH Office for Research on Disparities in Global Mental Health (formerly the Office for Special Populations), where she coordinated programs related to diversity in clinical research, and designed and conducted portfolio analyses in the areas of global mental health and mental health disparities. Ms. Corbett has a master's degree in public health from Johns Hopkins School of Public Health and a bachelor's degree in political science from the University of Illinois at Urbana-Champaign.



### Gloria Coronado, Ph.D.

Dr. Gloria Coronado is an epidemiologist and the Mitch Greenlick Endowed Distinguished Investigator in Health Disparities Research at Kaiser Permanente Center for Health Research. She completed her training at Stanford University and the University of Washington. Through her practice-based research, Dr. Coronado champions affordable, long-term solutions to health disparities issues. Over the course of her career, Dr. Coronado has served as a principal investigator or co-investigator on over 35 federally funded grants and has co-authored over 200 peer-reviewed manuscripts. She formerly served on the steering committee of the National Colorectal Cancer Roundtable and currently serves on the Board of Scientific Advisors for the National Cancer Institute.





### Rev. Kendrick E. Curry, Ph.D., M.S., M.Div.

Reverend Dr. Kendrick E. Curry is Senior Pastor at The Pennsylvania Avenue Baptist Church in Washington, D.C. As an adaptive leader who has pastored the church for the last 19 years, not only does Pastor Curry advance the cause of Jesus Christ nationally and internationally, but he has also developed a Kingdom-focused congregation with ministries and activities designed to meet the spiritual, emotional, and physical needs of the community. As a transformer, Pastor Curry partners with civic, social, and professional groups, and government agencies including AARP, Howard University, and the George Washington University Ron and Joy Paul Kidney Center to help bring about communal transformation. Through partnering with a mental health day treatment program for D.C. residents, producing cultural arts events, and convening family-oriented workshops, the church becomes aware of the relevant issues impacting the wider community and develops ways of addressing those issues. As an influencer, Pastor Curry serves on many boards and steering committees, especially those focused on social, educational, and health inequities. He is the current Chair of the Board of Directors for Education Forward D.C. Pastor Curry is also Co-Chair for the Community Engagement

Alliance (CEAL) to Overcome COVID-19 Disparities. Pastor Curry earned a B.S. in chemical engineering from Prairie View A&M University (TX), an M.S. and Ph.D. in chemical engineering from the University of Michigan—Ann Arbor, and an M.Div. from the Samuel DeWitt Proctor School of Theology at Virginia Union University. Pastor Curry is the husband to the Reverend Karen W. Curry and father to Keyona and Kendrick II.



### Willyanne DeCormier Plosky, Dr.P.H.

Dr. Willyanne DeCormier Plosky is an Acting Program Director at the Multi-Regional Clinical Trials Center of Brigham and Women's Hospital and Harvard, where she focuses primarily upon initiatives within the diversity, equity, and inclusion in clinical research portfolio. Previously she worked for Management Sciences for Health, the World Bank, Avenir Health, UNICEF, and USAID in the areas of health economics, maternal and child health, disability rights, HIV/AIDS, and humanitarian response. She also currently serves on the Board of Directors of All Farmers, an organization that supports refugee and immigrant families to access arable urban land and farmers markets.





### Denise A. Dillard, Ph.D.

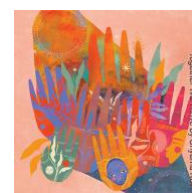
Dr. Denise Dillard is a Professor in the Elson S. Floyd College of Medicine Department of Medical Education and Clinical Sciences and Co-Director of the Institute for Research and Education to Advance Community Health at Washington State University. She is an Inupiaq Eskimo and was born in Fairbanks and raised in Anchorage, Alaska. Dr. Dillard is a licensed psychologist and has conducted postdoctoral quantitative and qualitative research since 1998. She previously served as the Director of Research for Southcentral Foundation, a large Tribal health organization in Anchorage, Alaska. Her research portfolio is diverse, addressing the wide-ranging health needs of American Indian and Alaska Native communities. At a national level, Dr. Dillard has served on the National Institutes of Health Tribal Advisory Committee.



### Gniesha Y. Dinwiddie, Ph.D.

Dr. Gniesha Y. Dinwiddie is a Health Scientist Administrator at the National Institute of Minority Health and Health Disparities (NIMHD). She is an expert in cardiovascular disease epidemiology, social determinants of health, mental health, immigrant health, maternal morbidity and mortality, cancer disparities, racial health disparities and health equity. In her current position, Dr. Dinwiddie develops funding opportunity announcements, creates strategic initiatives and programs, and represents NIMHD as a subject matter expert on numerous trans-NIH, NIH Roadmap and HHS-wide committees. Dr. Dinwiddie has an extensive experience working in academia and the federal government. She held faculty appointments at the University of Maryland College Park as an Assistant Professor and Associate Faculty at the Hopkins Center for Health Disparities Solutions at the Johns Hopkins Bloomberg School of Public Health. Upon leaving her faculty appointment in 2016, Dr. Dinwiddie joined the National Institutes of Health's Center for Scientific Review to oversee the peer review process for grant applications evaluated in the Cancer, Heart and Sleep Epidemiology B Study Section. As a Scientific Review Officer, she played an integral role in

improving the peer review process, was extensively involved in outreach efforts, and served as a review liaison to various NIH Institutes and Centers. Dr. Dinwiddie joined the Agency for Healthcare Research and Quality in 2019 to oversee the grant review process for applications submitted to the Healthcare Effectiveness and Outcomes Research Study Section, COVID-19 Special Emphasis Panels, conducted research on disparities in healthcare access, utilization, and quality of cardiac care. Dr. Dinwiddie received her B.A. in Social Science from the University of California at Irvine, M.A. in African American Studies from the University of California at Los Angeles, PhD in Medical Sociology from the University of Pennsylvania and postdoctoral training in the Office of Population Research at Princeton University.







## Leonard E. Egede, M.D., M.S.

Dr. Leonard E. Egede is a general internist and health services researcher, a Professor of Medicine, Chief of the Division of General Internal Medicine, Director of the Center for Advancing Population Science, the Inaugural Milwaukee Community Chair in Health Equity Research, Director of the Clinical and Translational Science Institute (CTSI) KL2 Program, and Director of the CTSI Master's in Clinical/Translational Research at the Medical College of Wisconsin (MCW). He is currently the principal investigator of three NIH R01s, a National Center for the Advancing Translational Sciences KL2 program, and an NIH R21. He has expertise in a range of research methodologies including clinical trials methodology, qualitative research methodology, community-based participatory research methodology, behavioral intervention methodology, and implementation science approaches. He has published over 420 peer-reviewed manuscripts related

to health disparities, psychosocial risk factors, cost of health care, and social determinants of health and has served on multiple NIH, CDC, and VA study sections focused on psychosocial risk, health services, behavioral research, and implementation science. Over the past 20 years, his contributions to science have focused on: 1) understanding, explaining, and reducing/eliminating health disparities; 2) understanding the impact of structural racism, social determinants of health and social risk on health outcomes; 3) advancing research on effectiveness and safety of telehealth and telemedicine as a modality for delivering effective clinical care; 4) understanding the role of behavioral economics on health and health outcomes for individuals with chronic disease; and 5) understanding the role of social determinants of health and social risk on health outcomes for vulnerable populations with non-communicable diseases in sub-Saharan Africa, Central America and the Middle East.



## Peter J. Embí, M.D., FACC, FACP, FAMIA, FIAHSI

Dr. Peter J. Embí is a Professor and Chair of the Department of Biomedical Informatics, Professor of Medicine, and Senior Vice President for Research and Innovation at Vanderbilt University Medical Center. An internationally recognized researcher, educator, and leader in the field of clinical and translational research informatics, with numerous peer-reviewed publications and presentations describing his innovations in the field, his areas of interest include clinical informatics, research informatics, public health informatics, and data-driven learning health systems. Prior to assuming this role on January 1, 2022, he served as President and CEO of the Regenstrief Institute, Professor and Associate Dean for Informatics and Health Services Research at the Indiana University (IU) School of Medicine, Associate Director at Indiana Clinical and Translational Sciences Institute and Vice President for Learning Health Systems at IU Health. Previous academic

leadership roles included professorships and serving as the nation's first Chief Research Information Officer at The Ohio State University, and on the faculty of the University of Cincinnati (UC), where he was the Founding Director of the UC Center for Health Informatics. Dr. Embí is a Fellow of the American College of Physicians, a Fellow of the American College of Medical Informatics, a Fellow of the American Medical Informatics Association (AMIA), and a Fellow of the International Association for Health Sciences Informatics. Among his other leadership roles, he was the past President and Chair of the board of directors of AMIA. He also has served on many national advisory boards, including recently concluding service.





### Ricki Fairley, M.B.A.

Ricki Fairley is the co-founder and CEO of TOUCH, The Black Breast Cancer Alliance, which addresses Black breast cancer as a unique and special disease state, with the overall goal of reducing the mortality rate for Black women. Ricki also founded and serves as co-host for “The Doctor Is In,” a weekly, live breast cancer advocacy web series on the BlackDoctor.org Facebook page that reaches over 3 million viewers. She is a founding member of #BlackDataMatters, in partnership with Ciitizen, the Center for Health Care Innovation, and Morehouse School of Medicine, to encourage and elevate the importance of Black women participating in clinical trial research. In January 2022, she started the When We Tri(al) Movement to change the game on Black women participating in clinical trials to improve outcomes for Black women with breast cancer with culturally humble and provocative communication that has resulted in

thousands of Black women entering clinical trial research. She also actively assists pharmaceutical companies in revamping and designing their clinical trial recruiting materials. Ricki holds a B.A. from Dartmouth College and an M.B.A. from Kellogg School of Management at Northwestern University. She is the President Emeritus of the Black Alumni of Dartmouth Association and is Board Chair Emeritus of Kenny Leon’s True Colors Theatre Company. Ricki has two daughters and three granddaughters that are her pride and joy. Amanda Brown, Dartmouth class of 2007, and Hayley Brown, Dartmouth class of 2014. Belle, Leia, and Hart motivate her to live her purpose to eradicate breast cancer every day.



### Rebecca Favor, Dr.P.H., C.P.H.

Dr. Rebecca Favor is a Human Subjects and Inclusion Policy Analyst in the Division of Human Subjects Research in the Office of Extramural Research (OER) in the NIH Office of the Director. Dr. Favor works primarily with OER’s Inclusion Policy Officer to implement new policies, enhance the understanding of inclusion-related requirements, and coordinate preparations for mandated reports to Congress. She also provides guidance on human subjects regulations and NIH policies. Prior to working with OER’s Division of Human Subjects Research, Dr. Favor worked in clinical trial research at MD Anderson Cancer Center and managed a variety of studies in hematologic disorders. She also conducted research on HIV-related stigma in Ghana. Dr. Favor obtained a master’s degree and doctorate degree in public health from the University of Texas Health Science Center at Houston School of Public Health.





### Marvella Ford, Ph.D., M.S.W., M.S.

Dr. Marvella Ford is a Tenured Professor in the Department of Public Health Sciences at the Medical University of South Carolina (MUSC), where she is the Associate Director of Population Sciences and Community Outreach and Engagement at the National Cancer Institute (NCI)-designated Hollings Cancer Center, where Dr. Raymond DuBois is Director. She completed her undergraduate training at Cornell University and she completed her graduate and postdoctoral fellowship training at the University of Michigan. Dr. Ford leads several federally funded cancer disparities-focused research grants, including an NCI Partnerships to Advance Cancer Health Equity (PACHE) U54 grant titled “South Carolina Center to Reduce Cancer Health Disparities (SC CADRE)” with Dr. Judith Salley from South Carolina State University, a historically Black university. Dr. Ford is also a multiple principal investigator (MPI), with Drs. David

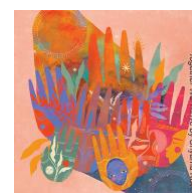
Marshall and Craig Lockhart, of an NCI-funded minority and medically underserved community oncology research program grant. She is an MPI of the MUSC Hollings Cancer Center’s first Stand Up To Cancer grant, with Dr. Robert Winn, Director of the Virginia Commonwealth University Massey Cancer Center. She previously co-led, with Dr. Nestor Esnaola, an R01 grant funded by the National Institute on Minority Health and Health Disparities to test the effectiveness of a multi-level patient navigation intervention in increasing receipt of lung cancer surgery in Black people diagnosed with early-stage lung cancer. Dr. Ford is the author or co-author of more than 115 peer-reviewed scientific papers. She co-edited the 2017 and 2020 *Advances in Cancer Research* volumes—titled “Cancer Disparities” and “Cancer Health Equity,” respectively—and has published nine book chapters.



### Mona Fouad, M.D., M.P.H.

Dr. Mona Fouad is a Professor of Medicine in the Division of Preventive Medicine, the Edward E. Partridge, M.D. Endowed Chair for Cancer Disparity Research, Director of the Minority Health and Health Equity Center, Vice President for Diversity, Equity and Inclusion, and Senior Associate Dean for Diversity and Inclusion in the Heersink School of Medicine at the University of Alabama at Birmingham (UAB). Dr. Fouad is recognized nationally as a leader in health disparities research. She served as a member of the National Institutes of Health (NIH) National Advisory Council on Minority Health and Health Disparities from 2008-2012. In 2017, Dr. Fouad was elected a member of the National Academy of Medicine. She was selected as the UAB 2018 Distinguished Faculty Lecturer for advancing the frontiers of science and outstanding contributions to education, research, and public service. In 2022, Dr. Fouad was awarded the Vilcek-Gold Award for Humanism in Healthcare, which is awarded to

outstanding immigrant health care professionals in the United States. Dr. Fouad obtained her M.D. from Alexandria University School of Medicine in Alexandria, Egypt and her M.P.H. from the University of Alabama at Birmingham School of Public Health. Dr. Fouad’s career at UAB began in 1991 and has focused on the health of minority and underserved populations, including efforts to increase involvement of special and underrepresented populations in research.







## Brittany Gerald

Brittany Gerald is the Senior Manager for Clinical Trial Diversity and Inclusion at Moderna, where she leads trial diversity efforts for infectious and latent disease trials. She holds a Bachelor of Science from Wake Forest University and has worked in clinical research for over 14 years in site management and study management roles. She has experience in cardiology, endocrinology, immunology, neurology, oncology and women's health therapeutic areas and has worked on over 30 clinical trials. Brittany is a Certified Breastfeeding Specialist and is studying to become a postpartum doula. Passionate about the Black maternal health crisis, Brittany is

currently developing a mobile app to help postpartum mothers/birthing persons track and report their signs and symptoms.

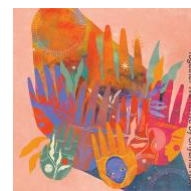
---



## Hengameh Heidarian-Raissy, Pharm.D.

Dr. Hengameh Heidarian-Raissy is the Interim Vice President for Research at The University of New Mexico Health Sciences Center. She is a Research Professor in the Department of Pediatrics, School of Medicine. She has been the principal investigator for more than 100 clinical trials that have contributed to new therapeutic interventions for asthma and cystic fibrosis; she has been the principal investigator for NIH funded Networks and large multisite trials such as the Childhood Asthma Management Program, the Childhood Asthma Research and Education Network and AsthmaNet. Dr. Raissy is currently co-principal investigator for the IDeA State Pediatric Trial Network, part of the Environmental influences on Child Health Outcomes (ECHO) Program,

funded by the NIH Office of the Director. The ECHO Program's goal is to understand the effects of a broad range of early environmental influences on child health and development. She is also one of the NIH-funded "Researching COVID to Enhance Recovery (RECOVER)" principal investigators developing multisite trials to understand, prevent, and treat long COVID.





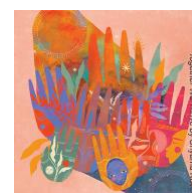
## Olga Herren, Ph.D.

Dr. Olga Herren is a Social Behavioral Scientist Administrator (Program Official) at the National Institute on Minority Health and Health Disparities (NIMHD). She focuses on promoting research that expands understanding of multilevel determinants of health behaviors and disparities among underrepresented populations. She provides expertise in conducting minority health and health disparities research in behavioral health, biopsychosocial determinants of health, cognition, obesity, and cancer risk. Prior to joining NIMHD, Dr. Herren worked as a Cancer Research Training Award Postdoctoral Fellow at the National Cancer Institute (NCI), in the Division of Cancer Control and Population Sciences in the Behavioral Research Program's Health Behaviors Research Branch. During her tenure at the NCI, she focused on conducting research in identifying differences in biopsychosocial determinants of health behaviors that may help to explain health disparities, as well as participating in programmatic efforts to support research in the intersection of obesity, cancer, and health disparities. Dr. Herren holds a Doctor of Philosophy in neuropsychology from Howard University. She also holds a Bachelor of Science in psychology from Indiana University of Pennsylvania.



## Jarrett A. Johnson, Dr.P.H., M.S.

Dr. Jarrett A. Johnson is a Program Official in the Division of Community Health and Population Science at the National Institute on Minority Health and Health Disparities (NIMHD). Dr. Johnson is interested in utilizing health education and health promotion strategies to positively impact health outcomes for populations that experience health disparities. He is particularly interested in novel, multi-level, community-based approaches that seek to address health disparities across the continuum of care for immigrant and African Descent populations. In 2010, Dr. Johnson earned a Master of Science in health services administration from D'Youville University (formerly D'Youville College). He then earned a Doctor of Public Health from the Jiann-Ping Hsu College of Public Health at Georgia Southern University with a concentration in community health behavior and education in 2017. His dissertation research focused on examining prostate cancer survivors' illness representations and treatment decision making role preferences. Prior to joining NIMHD, Dr. Johnson was a Cancer Prevention Fellow in the Genomic Epidemiology Branch of the Epidemiology and Genomics Research Program at the National Cancer Institute.







## Nancy Jones, Ph.D., M.A.

Dr. Nancy Jones is a Program Officer in the Division of Scientific Programs at the National Institute on Minority Health and Health Disparities (NIMHD). Dr. Jones's research interests include the ethical, legal, and social ramifications that research, medicine, and healthcare have on underserved populations. Examples include making explicit underlying norms, values, and philosophies to improve cultural congruence and lessen group harms. Another interest is to support research to improve the ability of theoretical constructs and conceptual models to explain the causes of health disparities. Dr. Jones's background spans basic and translational biomedical research; medical ethics; legal and social implications of research, healthcare, and policy; and design of curricula and scientific programs. She developed a code of ethics for life sciences and a curriculum to teach ethics and professionalism for biomedical science and engineering graduate students. Dr. Jones lectures on the ethics of health disparities and serves as an adjunct professor of bioethics at Trinity International University. Dr. Jones graduated with a B.S. in biochemistry in 1981 from Virginia Polytechnic Institute and State University. She earned a Ph.D. in biochemistry from Wake Forest University School of

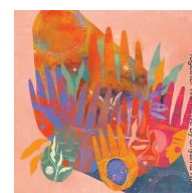
Medicine in 1987 before earning an M.A. in bioethics from Trinity International University in 2003. Dr. Jones joined NIMHD in 2012 and served as co-chair on the Etiology of Health Disparities for the Science Visioning as well as several trans-NIH committees on bioethics.



## Namratha R. Kandula, M.D., M.P.H.

Dr. Namratha R. Kandula is Professor of Medicine at Northwestern University Feinberg School of Medicine in the Division of General Internal Medicine, and a primary care physician. Dr. Kandula is internationally known for her research on South Asian American cardiovascular health and her leadership in community-engaged research to eliminate cardiovascular disease disparities. Her research has made significant contributions to how immigration and culture shape health, and the use of stakeholder engagement to adapt and implement evidence-based interventions for immigrants. Dr. Kandula's NIH-funded research studies, including the Mediators of Atherosclerosis in South Asians Living in American (MASALA) cohort study and the South Asian Healthy Lifestyle Initiative (SAHELI) and SAATH community-based prevention trials, use community-engaged approaches to equitable study design with a focus on outreach,

engagement, and inclusion of populations that are often excluded from clinical research. Dr. Kandula is also the recipient of a meritorious K24 mid-career mentoring grant from the National Heart, Lung, and Blood Institute that recognizes her outstanding research and commitment to mentoring students, trainees, and faculty in science that aligns with community priorities.







## Natalie Klein, Ph.D.

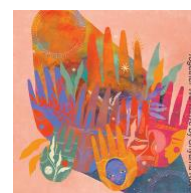
Dr. Natalie Klein is the Director of the Division of Policy and Assurances for the U.S. Department of Health and Human Services, Office for Human Research Protections (OHRP). She joined OHRP in 2021 from the U.S. Army Medical Research and Development Command, where she served as a liaison to intramural research institutes for human research protections issues and helped provide regulatory oversight for extramural research. She holds a doctorate in brain and cognitive sciences.



## Deborah E. Linares, Ph.D., M.A.

Dr. Deborah E. Linares is a Health Scientist Administrator (Program official) in the Division of Integrative Biological and Behavioral Sciences at the National Institute on Minority Health and Health Disparities (NIMHD). She focuses on promoting research to understand behavioral, environmental, and interpersonal factors contributing to resilience and susceptibility to adverse health conditions across the life course among disadvantaged and underserved populations. She oversees a broad portfolio of research, training, and center-based grants at NIMHD in behavioral health, the life course, family health, women's health, and child development. Prior to joining NIMHD, Dr. Linares worked as a health scientist/program officer at the Health Resources and Services Administration in the Maternal and Child Health Bureau, where she managed maternal and child health research programs. Dr. Linares holds a Doctor of Philosophy in community health from the University of Illinois, Urbana-Champaign and a Master of Arts in psychology from California State University, Los Angeles. She

has received the HHS Secretary's Award for Distinguished Service and NIH Director's Awards for her efforts in leading and supporting mission-critical NIMHD research initiatives to understand and address the impact of the COVID-19 pandemic among populations experiencing health disparities.





## Jenny Luray

Jenny Luray is Senior Vice President of Strategy and Public Engagement for Research!America, an alliance advocating for science, discovery, and innovation to achieve better health for all. In addition to overseeing the organization's press and marketing activities and contributing regularly to its policy work, Jenny leads civic science initiatives that aim to build ongoing engagement between scientists and non-scientists. She is a frequent public speaker on behalf of Research!America. Jenny has championed a range of significant policy issues across the medical and public health ecosystems while in leadership positions in government, industry, and the non-profit sector. Prior to joining Research!America, Jenny directed U.S. policy and government affairs for two global life science companies, BD and Abbott, and she led the Susan G. Komen Advocacy Alliance as its President. She served as Chief of Staff to former Senator Barbara Mikulski, as Legislative Director to former Congresswoman Nita Lowey, and as Deputy Assistant to the President in the Clinton White House. Jenny is a member of the Brown University School of Public Health's Advisory Council.



## Arch G. "Chip" Mainous III, Ph.D.

Dr. Arch G. "Chip" Mainous III is Professor and Vice Chair for Research in the Department of Community Health and Family Medicine and Professor in the Department of Health Services Research, Management and Policy at the University of Florida. He earned his B.A. from the University of Kentucky and his master's and Ph.D. from the University of Texas at Austin. He also completed a one-year primary care health policy fellowship with U.S. Department of Health and Human Services. Dr. Mainous' research focuses on improving the delivery of health care and better recognition of disease in primary care. He is an expert on trust and the patient-physician relationship. He is an internationally-recognized leader in primary care research, with more than 450 peer reviewed publications. His work has been cited more than 28,500 times with an H index of 81. He has received the Distinguished Research Mentor Award and the Maurice Wood Award for Lifetime Contribution to Primary Care Research from the North American Primary Care Research Group. He has also won the Innovative Program Award from the Society of Teachers of Family Medicine. He has served as a Special Advisor for Health and Healthcare to the Prime Minister of Haiti. He currently serves as the Deputy Editor of the journal

Family Medicine and the Specialty Chief Editor of Frontiers in Medicine: Family Medicine and Primary Care.





## Vanessa Marshall, Ph.D., CCRP

Dr. Vanessa Marshall is a Social and Behavioral Scientist Administrator (Program Officer) in the Office of the Director at the National Institute of Minority Health and Health Disparities. Her research focuses on improving health outcomes and promoting research to understand and address the multilevel determinants of factors that play a role in health disparities. She provides expertise in key research areas including minority health, health disparities, health services research, community-engaged research, clinical trials, public health, interventions, quality improvement, implementation, and evaluation. She has fostered innovative collaborations and partnerships to promote and support evidence-based research to inform clinical practice and policy. Dr. Marshall's experiences have allowed her to work at local, regional, national, and international levels to investigate risk and protective factors among various populations to address health disparities.



## Bob McNellis, M.P.A., P.A.

Bob McNellis is a Senior Advisor for Disease Prevention at the Office of Disease Prevention (ODP) in the NIH Office of the Director. Serving in this role since February 2022, he leads the effort to identify prevention research areas for investment across the NIH, and serves as the NIH liaison to the U.S. Preventive Services Task Force (USPSTF) and the Community Preventive Services Task Force. Mr. McNellis is also the Scientific Advisor for the ODP's Pathways to Prevention Program. Before assuming these responsibilities, he was Senior Advisor for Primary Care at the Agency for Healthcare Research and Quality (AHRQ), where he worked on a broad portfolio of intramural and extramural primary care research. At AHRQ, Mr. McNellis conducted research on the dissemination and implementation of clinical preventive services in primary

care practice. He has expertise in quality improvement and evidence-based strategies to improve clinical practice. In addition, Mr. McNellis served as a medical officer for the USPSTF from 2011 to 2018. Prior to joining AHRQ, Mr. McNellis was Vice President for Science and Public Health at the American Academy of Physician Assistants, and was also an Assistant Professor at The George Washington University School of Medicine and Health Sciences. Mr. McNellis earned his Master of Public Health in epidemiology and preventive medicine and his physician assistant credential from The George Washington University.







## Martin Mendoza, Ph.D.

Dr. Martin Mendoza is Director of Health Equity for the NIH *All of Us* Research Program. In this role, he provides leadership and high-level expertise to improve inclusion and equity in precision medicine and leads the program's efforts to promote health equity. Previously, Dr. Mendoza led extramural research for minority health in the Office of the Commissioner at the U.S. Food and Drug Administration (FDA). He is a recognized expert in clinical trial diversity and has testified in support of this to Congress. Dr. Mendoza is also the primary author of the pivotal FDA guidance recommending required submission to FDA of a diversity and inclusion plan by clinical trial sponsors. Dr. Mendoza's original idea and recommendation became federal law in December 2022. Dr. Mendoza has also served as Director of the Division of Policy and Data at the Office of Minority Health in the Office of the Secretary of

Health and Human Services, and in the Division of Clinical Research at the National Institute of Neurological Disorders and Stroke. He conducted his primary research training in the National Cancer Institute's Pediatric Oncology Branch and helped to map chromosome 7 as part of the Human Genome Project during his tenure at the National Human Genome Research Institute. Dr. Mendoza is a graduate of the University of Maryland, Baltimore County and earned a Ph.D. in cancer biology from Johns Hopkins University.



## Angel Love Miles, Ph.D.

Dr. Angel Love Miles is a Program Rehabilitation Specialist at the National Institute on Disability and Rehabilitation Research (NIDILRR). She manages a diverse portfolio of NIDILRR awards and shares her expertise in multiple ways to assist NIDILRR in meeting its mission to generate new knowledge and to promote its effective use to improve the abilities of individuals with disabilities. Prior to working at NIDILRR, Dr. Miles was the health care/home and community based services Policy Analyst at Access Living of Metropolitan Chicago. Dr. Miles earned her doctorate in Women's Studies at the University of Maryland College Park and completed her postdoctoral fellowship in the College of Applied Health Sciences at the University of Illinois at Chicago. Her dissertation "Barriers and Facilitators to Homeownership for African American Women with Physical Disabilities" highlighted how

education, economics, architecture, and discrimination, combine with personal issues of identity and self-esteem to create barriers to home ownership. She specializes in qualitative and intersectional approaches to research. Her recent publications include ["Strong Black Women" African American Women With Disabilities, Intersecting Identities, and Inequality](#) and [Advancing Health Equity and Reducing Health Disparities for People With Disabilities in Health Affairs in the United States](#).





### Priscah Mujuru, Dr.P.H., M.P.H., R.N.

Dr. Priscah Mujuru is a Program Director at the National Institute on Minority Health and Health Disparities (NIMHD), where she manages a diverse portfolio that includes community and clinical research involving populations across the lifespan. Her interests include health disparities in women and child health; cognitive function; adherence to treatments; environmental exposures; and rural health. In 2019, she published a blog on rural health. In 2022, she co-authored an article—published by the American Journal of Prevention Medicine—on the Centers of Excellence program for health disparities, with a special focus on obesity-related research. Prior to joining the NIMHD, Dr. Mujuru was a scientific research officer at the NIH Center for Scientific Review and at the National Institute of Child Health and Human Development. Before joining NIH, Dr. Mujuru spent seventeen years at West Virginia University, where she conducted clinical and community-based research addressing health disparities in asthma, obesity, and occupational and environmental exposures in rural populations. She also led projects in a

biomedical pipeline program that introduced high school students from underserved and disadvantaged communities to health sciences careers. Dr. Mujuru has also guided projects that evaluated public health programs for health professionals and medical students in Africa. Dr. Mujuru earned a Dr.P.H. in epidemiology from the University of Pittsburgh and an M.P.H. in environmental health from Boston University, where she conducted a project on lead exposures in children. She has a B.Sc. in occupational/industrial hygiene from South Bank University (London, England), a midwifery diploma, and a B.S.N. from West Virginia University. Dr. Mujuru has published several scientific papers in her areas of interest.



### Tung Nguyen, M.D.

Dr. Tung Nguyen is Professor of Medicine at the University of California, San Francisco (UCSF), where he provides primary care to a diverse patient population. His research focuses on achieving health equity using community-based participatory research, patient-centered outcomes research, and other stakeholder-engaged methods. Dr. Nguyen has conducted intervention research using social networks, traditional media, and mobile applications with culturally and linguistically diverse populations on breast, cervical, and colorectal cancer screening, patient navigation, tobacco control, hepatitis B and C screening, nutrition and physical activity, and end-of-life care. At UCSF, Dr. Nguyen is Associate Vice Chancellor of Research Inclusion,

Diversity, Equity, and Anti-racism (IDEA). At the UCSF Helen Diller Family Comprehensive Cancer Center, Dr. Nguyen is Associate Director of Diversity, Equity, Inclusion, and Accessibility (DEIA) and Co-Leader of the Cancer Control Research Program. He is a principal investigator of the UCSF Clinical and Translational Sciences Institute, Director of its Research Action Group for Equity (RAGE) Program, which aims to increase diversity among research participants, and serves as a leader on the national Clinical Translational Science Award DEIA Enterprise Committee. He is also a principal investigator of SFBUILD, an NIH-funded partnership between UCSF and San Francisco State University to promote health research workforce diversity. Dr. Nguyen is a bilingual, first-generation, Vietnamese American who founded the Asian American Research Center on Health (ARCH) and served as Chair of President Obama's Advisory Commission on Asian Americans and Pacific Islanders.





### Carrie Nieman, M.D., M.P.H.

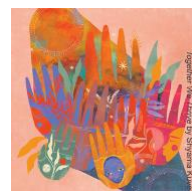
Dr. Carrie Nieman is an Associate Professor in the Department of Otolaryngology-Head and Neck Surgery at Johns Hopkins and core faculty at the Johns Hopkins Cochlear Center for Hearing and Public Health. She is a clinician and researcher committed to eliminating hearing care disparities among older adults. Funded by the National Institutes of Health and the National Academy of Medicine, her work seeks to extend access to hearing care for older adults through evidence-driven, community-delivered approaches. Her intervention trials include some of the largest trials to date to include low-income and racial ethnic minority older adults with hearing loss.



### Yewande Oladeinde, Ph.D.

Dr. Yewande Oladeinde is a Social and Behavioral Science Administrator (Program Official) in the Division of Clinical and Health Services Research at the National Institute on Minority Health and Health Disparities. Her research focuses on maternal and child health, patient and family engagement in research, understanding the role culture plays in shaping people's perceptions of health and illness and how it influences their choices and their behaviors, with a goal of implementing culturally and contextually appropriate interventions. She has spent much of her academic career developing knowledge that delves deep into understanding human sexuality from a sociocultural perspective; specifically, as they relate to the health and well-being of sub-populations that have been traditionally marginalized as a result of age, socioeconomic status, gender, race/ethnicity. Prior to joining NIH, she worked at the Centers for Medicare and Medicaid Services and the Food and Drug Administration. Her research training has broadened her perspective on understanding patient-centered health-seeking behaviors from prevention to treatment, and this allows her to bring an integrated, interdisciplinary perspective

to her work. Her work has been published in several academic journals, and she has presented at national conferences. She earned her bachelor's degree in biology from East Stroudsburg University and her Ph.D. in biobehavioral health from Pennsylvania State University, and completed a patient-centered outcome research postdoctoral fellowship at the University of Maryland School of Pharmacy.







## Olufunmilola (Lola) Olufemi, Ph.D.

Dr. Lola Olufemi is the Chair Emeritus of the Special Populations Research Forum (SPRF), an HHS-wide special interest group with over 200 members that focuses on inclusion across the biomedical ecosystem including training, funding, workforce diversity, health disparities, and clinical research. She is also the Founder and Chair of SPRF's Clinical Research Recommendation Committee (CRRC). CRRC's mission is to advocate for practical, evidence-based strategies that make NIH clinical research more inclusive and robust. Dr. Olufemi is an award-winning senior portfolio manager who handles the agreement and invention portfolio for the National Institute of Neurological Disorders and Stroke (NINDS) intramural investigators in the Surgical Neurology Branch, Clinical Epilepsy Section, Stroke Branch, and Biochemistry Branch. She manages patent prosecution for inventions made by NINDS intramural investigators. She has executed over 450 agreements that include both infectious and chronic disease research. She has had patents issued in the U.S. and abroad. She was awarded the NIH Director's Award, in both 2019 and 2021, for her contribution to diversity,

equity, and inclusion efforts. She was recognized in the UNITE, Power of an Inclusive Workplace Recognition Project in 2021. She was also awarded the NINDS Director's Award in 2022 for her work in increasing the accessibility of NIH research material to the extramural community.



## Eliseo J. Pérez-Stable, M.D.

Dr. Eliseo J. Pérez-Stable is Director of the National Institute on Minority Health and Health Disparities at the National Institutes of Health. He earned his B.A. in chemistry in 1974 and M.D. in 1978 from the University of Miami. He then completed his primary care internal medicine residency and a research fellowship in general internal medicine at University of California, San Francisco (UCSF) before joining the faculty as an Assistant Professor in 1983. Dr. Pérez-Stable practiced primary care internal medicine for 37 years at UCSF. His research interests have centered on improving the health of individuals from racial and ethnic minority communities through effective prevention interventions, understanding underlying causes of health disparities, and advancing patient-centered care for underserved populations. Recognized as a leader in Latino health care and disparities research, he spent 32 years leading research on smoking cessation and tobacco control in Latino populations in the United States and Latin America. Dr. Pérez-Stable has published more than 300 peer-reviewed papers.





## Shelly Pollard, M.B.A.

Shelly Pollard is the Outreach Coordinator and the NIMHD Insights Blog Editor in the Office of Communications and Public Liaison at the National Institute on Minority Health and Health Disparities (NIMHD). As Outreach Coordinator, she helps strengthen NIMHD's engagement with two of its major programs: [Brother, You're on My Mind](#) and [Fuel Up to Play 60](#). She is also developing a framework to expand the Institute's outreach activities. As Blog Editor, Ms. Pollard works with program staff and grantees to raise national awareness of the prevalence and impact of health disparities and efforts to help reduce and eliminate those disparities. Before joining NIMHD, Ms. Pollard worked in the Office of Communications at the National Institute of General Medical Sciences (NIGMS), where she helped

communicate the importance of biomedical research to NIGMS stakeholders by managing a scientific blog for the research community and science education activities for students. She also worked in the Office of Communications at the National Center for Research Resources and in the NIH Director's Office of Communications and Public Liaison, where she served as coordinator of the NIH Advisory Committee to the Director and worked with the Director's Council of Public Representatives, which was instrumental in supporting NIH's [Public Trust Initiative](#). Ms. Pollard holds a Master of Business Administration from the University of Phoenix and a Bachelor of Science in consumer economics from the University of Maryland.



## Nicole Redmond, M.D., Ph.D., M.P.H.

Dr. Nicole Redmond is Chief of the [Clinical Applications and Prevention Branch](#) (CAPB), within the [Division of Cardiovascular Sciences](#) (DCVS) at the National Heart, Lung, and Blood Institute (NHLBI). As a medical officer in the branch since 2016, Dr. Redmond has developed an extensive portfolio in cardiovascular disease prevention and treatment, with interests in the importance of community engagement and addressing structural and social determinants of health to mitigate health disparities. She also has a strong commitment to mentoring and career development, particularly for clinician-scientists and groups underrepresented in biomedical research, as evidenced by her involvement and leadership in the NIH Pathways summer internship program, Research in Residency program, and now as the program official for the [NHLBI Programs to Increase Diversity Among Individuals Engaged in Health-Related Research \(PRIDE\) program](#). She has

advanced the interests of CAPB, DCVS, and NHLBI through her participation and leadership in several trans-NIH initiatives, including the [All of Us Research Program](#), [Artificial Intelligence/Machine Learning Consortium to Advance Health Equity and Researcher Diversity](#) (AIM-AHEAD), and most recently she Co-Chairs the Office of Disease Prevention "[ADVANCE: Advancing Prevention Research for Health Equity](#)" cardiometabolic working group. Dr. Redmond actively participates in national and local networks of other clinicians and researchers involved in research, teaching, and clinical care focused on eliminating health disparities. She is also a Fellow of the American College of Physicians and a member of the American Heart Association. Dr. Redmond's involvement in these organizations facilitates her capability to disseminate research findings and innovations in practice among leaders and stakeholders nationally.





## Gina Roussos, Ph.D.

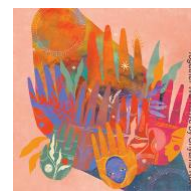
Dr. Gina Roussos is a Social and Behavioral Science Administrator at the National Institute on Minority Health and Health Disparities (NIMHD), in the Immediate Office of the Director. Her work includes coordinating community outreach and external engagement, facilitating NIH-wide collaborative efforts, and developing and managing scientific initiatives. Dr. Roussos is a social scientist by training and her areas of expertise include institutional and interpersonal biases and their impacts on health care and health outcomes for minoritized populations; diversity, equity, and inclusion; and maternal mortality and morbidity. She began her time at NIMHD as a Science and Technology Policy Fellow co-sponsored by the American Association for the Advancement of Science and the American Psychological Association. Before coming to NIMHD, Dr. Roussos worked at Diversity Science, developing effective means of facilitating diversity, equity,

and inclusion in workplace and health care settings. Dr. Roussos completed her doctorate in social psychology from Yale University, where she studied the development and mitigation of intergroup bias, and her Bachelor of Science in psychology from the University of Pittsburgh.



## Katrina Serrano, Ph.D.

Dr. Katrina Serrano is a Program Director in the Office of Minority Health Research Coordination at the National Institute of Diabetes and Digestive and Kidney Diseases. She oversees a portfolio and leads efforts in advancing health disparities and health equity research, as well as promoting and enhancing scientific workforce diversity and the training of underrepresented investigators. She previously served as a Program Officer in the NIH Office of Research on Women's Health where she led efforts to address health disparities and inequities in women's health and health care. She received her doctorate in health education from Texas A&M University and completed a postdoctoral training that focused on health behaviors and health disparities in cancer and cancer prevention at the National Cancer Institute.







## Carolina Solis Sanabria, M.D., M.P.H., FACS

Dr. Carolina Solis Sanabria is a Program Official in the Division of Clinical and Health Services Research at the National Institute on Minority Health and Health Disparities (NIMHD) and a board-certified general surgeon with a focus on surgical disparities, global health and general surgery. She has done work in Nicaragua evaluating surgical capacity in Ministry of Health hospitals as well as surgical outcomes research in emergency and general surgery. She also has interests in immigrant, rural and Hispanic health. She received her B.S. in biology and French from Yale College, and her M.D. from Harvard Medical School in 2009. She then trained in general surgery at Duke University Medical Center and Inova Fairfax Hospital. During her

residency, she obtained an M.P.H. from Harvard T.H. Chan School of Public Health with a concentration in global health in 2012, and spent a year as a Fulbright Scholar in Nicaragua conducting surgical research. Since completing her residency at Inova Fairfax Hospital in 2017, she has practiced as a general surgeon in the Washington, D.C. area, as well as in rural settings in Oklahoma, Montana, North Carolina and Virginia. She is a Fellow of the American College of Surgeons and currently practices as a surgeon with the Holy Cross Health Center in Montgomery County, Maryland.



## Sindhu K. Srinivas, M.D., M.S.C.E.

Dr. Sindhu K. Srinivas is a Professor of Obstetrics and Gynecology, Vice Chair for Quality and Safety, and Associate Chief Medical Officer for Quality and Safety for the Hospital of the University of Pennsylvania. She has developed a successful research program in maternal fetal medicine including both clinical/epidemiologic and health services. Her current areas of research include: 1) evaluating innovative health care delivery strategies to improve maternal outcomes and eliminate inequities and 2) studying and developing obstetric quality measures, as well as understanding the impact of practice changes (individual level and system level) on maternal and neonatal outcomes. Her clinical interests are in the areas of hypertensive disorders of pregnancy, cardiovascular disease in pregnancy, and pregnancy care and counseling at the threshold of viability. As an obstetrician, gynecologist, and maternal fetal medicine specialist, Dr. Srinivas is deeply committed to improving health outcomes of women and children and

eliminating inequities through her leadership, research, advocacy, and clinical work. She serves on the Pennsylvania Maternal Mortality Review Committee. She is actively involved in Philadelphia-wide initiatives to eliminate maternal morbidity and mortality. Nationally, she is an active member of the Society for Maternal-Fetal Medicine (SMFM), is the immediate past Chair of the SMFM Health Policy and Advocacy Committee, and is currently on the SMFM Board of Directors and Executive Committee. She has been a strong advocate for the inclusion of pregnant and lactating people into clinical trials.





## May Sudhinaraset, Ph.D.

Dr. May Sudhinaraset is an Associate Professor in Community Health Sciences in the School of Public Health at the University of California, Los Angeles. She is trained as a social epidemiologist from Johns Hopkins Bloomberg School of Public Health. Her research focuses on understanding the social determinants of migrant, adolescent, and women's health both globally and in the U.S. Her work centers on three complementary streams of work: (1) social and cultural contexts of vulnerable adolescents and women; (2) global women's health and quality of service delivery; and (3) social policies and immigration in the U.S. Her global work includes women's experiences during childbirth, family planning, and abortion services, development of quality improvement interventions in Kenya and India, and large-scale maternal and child health evaluations in Myanmar. She currently is principal investigator of the BRAVE (Bridging Communities Raising Asian and Pacific Islander Voices for Health Equity) Study, the first study to assess the health status and health care utilization of undocumented Asian and Pacific Islander young adults. Using community participatory approaches, this study explores the

impact of social policies, including Deferred Action for Childhood Arrivals, on the social and health outcomes of undocumented young adults. She has collaborated with institutions and researchers in Myanmar, Kenya, India, Thailand and China.



## Greg Talavera, M.D., M.P.H.

Dr. Greg Talavera is a Professor in the Department of Psychology at San Diego State University, where he founded and co-directs the community-based South Bay Latino Research Center. He obtained his B.A. from the University of California, San Diego (UCSD), his medical degree from the University of Utah, and his M.P.H. from the San Diego State University/UCSD joint program, where he also did his preventive medicine residency training. As a bilingual, bicultural physician with over 30 years of community-based clinical and public health research experience, he has dedicated his clinical practice, research and advocacy to reducing disparities in the Latino Community, both in San Diego and nationally. During the early part of his career, he practiced

medicine in the Spanish-speaking, underserved communities of San Diego's border region. As a family practitioner, he came to understand the culture-specific beliefs that serve as barriers to quality chronic disease clinical management. Over the last 30 years he has designed and managed research programs involving cardiovascular disease prevention, breast and cervical cancer screening promotion, behavioral interventions for diabetes care, recruitment of minorities into long-term clinical trials, and smoking cessation. In total he has led 21 grants, contracts, and supplements totaling over \$32 million in direct costs. All of these service and research programs have been culturally- and linguistically-appropriate for indigent, low-literacy Spanish-speaking Latinos. He currently serves as the principal investigator for the landmark *All of Us* Research Program at San Ysidro Health, a federally qualified health center.







### Vaatausili “Va’a” Tofaeono, M.B.A., Ph.D. (c)

Va’a Tofaeono is the Executive Director and INSPIRE co-principal investigator at the American Samoa Community Cancer Coalition. Working in public health since 2004, Va’a began by coordinating a local cancer prevention and control program, conducting innovative work to reduce the cancer burden through policy, systems, and environmental changes. One result was the creation of American Samoa’s first legislative policy eliminating second-hand smoke exposure in enclosed public places. Despite the change, Va’a continued to witness first-hand the struggles of cancer patients and their families, who had to watch loved ones deteriorate. In 2016, Va’a changed his focus from policy to research, using a grant to build capacity and determine whether a lack of functional health literacy was contributing to low rates of colorectal cancer screening. The research team found a statistical association and validated the assessment tool. Va’a continues to advance colorectal cancer research by piloting predictive algorithms to help health care professionals with clinical decision making. In addition, Va’a applied for two

administrative supplements to pilot the efficacy of Alzheimer’s disease and related dementia (ADRD) screening tools within the Samoan population. This led to the first R01 application funded in American Samoa—a genetics study that uses plasma biomarkers to help determine ADRD prevalence in a sample of 981 adults age 50 or older in American Samoa. Va’a is currently taking courses in pursuit of a Ph.D. in indigenous health.



### Allissa Torres, M.S.W.

Allissa Torres (she/her) is the Director of Mental Health Equity at Mental Health America (MHA). Her role is to ensure that MHA centers equity in every part of its work. Allissa spearheads projects such as the BIPOC (Black, Indigenous, and People of Color) Mental Health Month campaign in July and advises on many other campaigns throughout the year. Allissa has over 10 years of experience working with mental health nonprofits on local, regional, and national levels. Allissa holds two degrees: a Master of Social Work from the University of Southern California and a Bachelor of Arts in psychology from Arizona State University. She is passionate about all things equity and is particularly interested in the intersection of social justice and mental health. She is a firm believer in community-centered care, grassroots advocacy, and liberation-based practice. Allissa’s lived experience as a Latina woman with mental health diagnoses drives much of her passion in this field.







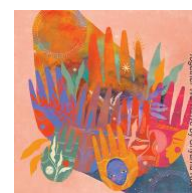
### Debara Tucci, M.D., M.S., M.B.A.

Dr. Debara Tucci is Director of the National Institute on Deafness and Other Communication Disorders, a position she has held since September 2019. Prior to coming to NIH, Dr. Tucci was a longtime faculty member at Duke University, in the Department of Head and Neck Surgery & Communication Sciences. Dr. Tucci's research has focused on understanding the biological effects of hearing loss in animal models, and on treatment of otologic disease, including with cochlear implantation. She partnered with the Duke Clinical Research Institute and colleagues at Duke to develop a national practice-based research network, and led a research team that implemented and studied outcomes and cost-benefit of adult hearing screening in primary care clinics at Duke. She has trained and mentored many resident physicians, junior faculty, and graduate students, both informally and through development of formal research training and mentoring programs. Current work as Co-Chair of the Lancet Commission on Global Hearing Loss allows her to pursue her passion for understanding and impacting hearing loss disability in diverse and underserved populations worldwide.



### Debbie Vitalis, Ph.D., M.P.H.

Dr. Debbie Vitalis is an American Association for the Advancement of Science, Science and Technology Policy Fellow at the National Heart, Lung, and Blood Institute. Her background and research interests include maternal and child health, HIV/STDs, breastfeeding/nutrition, health disparities, social determinants of health, and community-based participatory research. Dr. Vitalis earned a Bachelor of Science in biology from Pace University, a Master of Public Health from New York University, and a doctorate in epidemiology from University College London. She completed postdoctoral fellowships at Yale University and Morehouse School of Medicine.





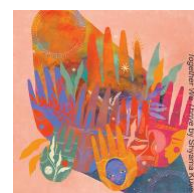
### Emily Wang, M.D., M.A.S.

Dr. Emily Wang is a Professor in the Yale School of Medicine, Director of the SEICHE Center for Health and Justice, Director of the Health Justice Lab, and Co-Founder of the Transitions Clinic Network. She leads these initiatives, with a focus on identifying and applying strategies to improve the health of individuals and communities impacted by incarceration.



### Karriem S. Watson, D.H.S., M.S., M.P.H.

Dr. Karriem S. Watson is the Chief Engagement Officer of the NIH *All of Us* Research Program. Dr. Watson leads the *All of Us* Research Program's efforts to foster relationships with participants, communities, researchers, and providers across the U.S. to help build one of the largest, most diverse health databases of its kind to study health and illness. Prior to joining NIH, Dr. Watson spent over 15 years as a community-engaged research scientist with prior research funding from the NIH addressing cancer prevention and control. Dr. Watson also held administrative roles in leading research and engagement in federally qualified health centers in the Chicagoland area.





## Monica Webb Hooper, Ph.D.

Dr. Monica Webb Hooper is Deputy Director of the National Institute on Minority Health and Health Disparities. She is an integral member of the institute's leadership, working closely with the Director to oversee all aspects of the institute and to support critical scientific initiatives and recommendations to improve minority health, reduce health disparities, and promote health equity. Dr. Webb Hooper is Co-Chair of the NIH Inclusion Governance Committee, an official component of the extramural NIH governance structure focused on inclusion of women, racial and ethnic minority persons, and individuals across the lifespan in clinical research. She also co-leads working groups for NIH-wide initiatives, including efforts to understand and address the disproportionate impacts of COVID-19 among populations with health disparities. Dr. Webb Hooper is an internationally

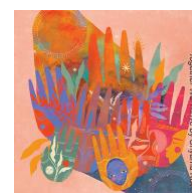
recognized translational behavioral scientist and licensed clinical health psychologist. She has dedicated her career to the scientific study of minority health and racial/ethnic disparities, focusing on chronic illness prevention and health behavior change. As a Tenured Professor, she was a community-engaged researcher and successfully engaged thousands of racial and ethnic minority and other underserved participants in biomedical research. Dr. Webb Hooper completed her doctorate in clinical psychology at the University of South Florida, her internship in medical psychology at the University of Florida Health Sciences Center, and her Bachelor of Science at the University of Miami.



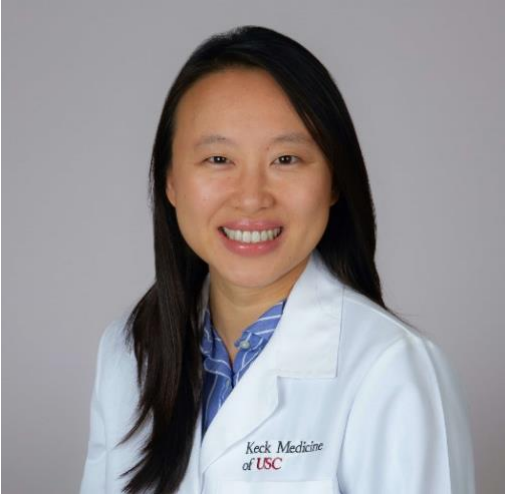
## Nora Wong, M.P.H.

Nora Wong is a Legislative Liaison at the National Institute on Minority Health and Health Disparities (NIMHD). She is responsible for planning, analyzing, conducting outreach, and providing oversight on all legislative and Congressional affairs for the institute. Previously, Nora was a Health Science Policy Analyst and Project Manager for the Office of Program Planning and Analysis at the National Eye Institute, where she contributed to and led activities in legislative affairs, strategic planning, policy evaluation, and research analytics related to vision and eye research. While at NEI, Nora completed short-term assignments as a legislative and policy analyst detail at the National Library of Medicine and as an HHS health liaison to the Federal Emergency Management Agency for the national COVID-19 public health response efforts. Prior to her time at NIH, Nora was a Senior Associate with the Pew Charitable Trusts, where she served as a policy researcher evaluating the public health impacts of antibiotic resistance. Nora also held various roles at the U.S. Military HIV Research Program conducting epidemiological

assessments and managing laboratory diagnostics and operations. Nora earned a B.S. in microbiology from the University of Maryland- College Park and an M.P.H. in environmental health science and policy from the George Washington University Milken Institute School of Public Health.







## Kali Zhou, M.D., M.A.S.

Dr. Kali Zhou is a transplant hepatologist and Assistant Professor in the Division of Gastrointestinal and Liver Diseases at the Keck School of Medicine, University of Southern California. She earned her medical degree from the Northwestern University Feinberg School of Medicine, completed an internal medicine residency at the University of California, Los Angeles, and a T32 gastroenterology and transplant hepatology fellowship at the University of California, San Francisco, where she also completed a Master in Advanced Studies in clinical research. She was also a Fulbright Scholar investigating the epidemiology of HCV in Southern China. Her current research program focuses on disparities in liver cancer and utilizing novel geospatial approaches to

improve cancer equity and outcomes for low-income, multi-ethnic populations, supported by a K23 from the National Institute on Minority Health and Health Disparities. She is also grant funded to study the impact of immigration and acculturation on completing guideline-based HBV metrics and to pilot a need-based Lyft rideshare intervention to improve time to listing among liver transplant candidates. Her career goal is to develop effective, pragmatic, and efficient interventions that will ultimately reduce socioeconomic disparities in patients with liver diseases.

