

Considerations for School and Community- Based prevention interventions for LGBTQ+ adolescents



Jeremy T. Goldbach, PhD, LMSW
Masters & Johnson Distinguished Professor of Sexual Health and Education
Brown School, Washington University in St. Louis
Feb, 2023

Disclosures



Research discussed in this presentation was supported by the National Institute on Minority Health and Health Disparities under awards 1R21MD015945 and 1R01MD016082. The content is solely the responsibility of the authors and does not necessarily represent the official views of the National Institutes of Health.

Three Key Take-Aways

- Health disparities don't operate in a vacuum, and our interventions can't either
- Following the rules is great but complex programs will require adaptation
- Need for equal focus on reducing risk while simultaneously building resilience



The Development of Proud & Empowered

- Proud and Empowered (10 Session Intervention)
 - Built alongside Q&T adolescents (2012-2022)
 - Life History Interviews to identify broad stressors (Zumberge Foundation)
 - Psychometric measurement to refine domains (R21HD082813)
 - Prospective study to establish temporality (R01MD012252)
 - Feasibility Study (R21MD013971)



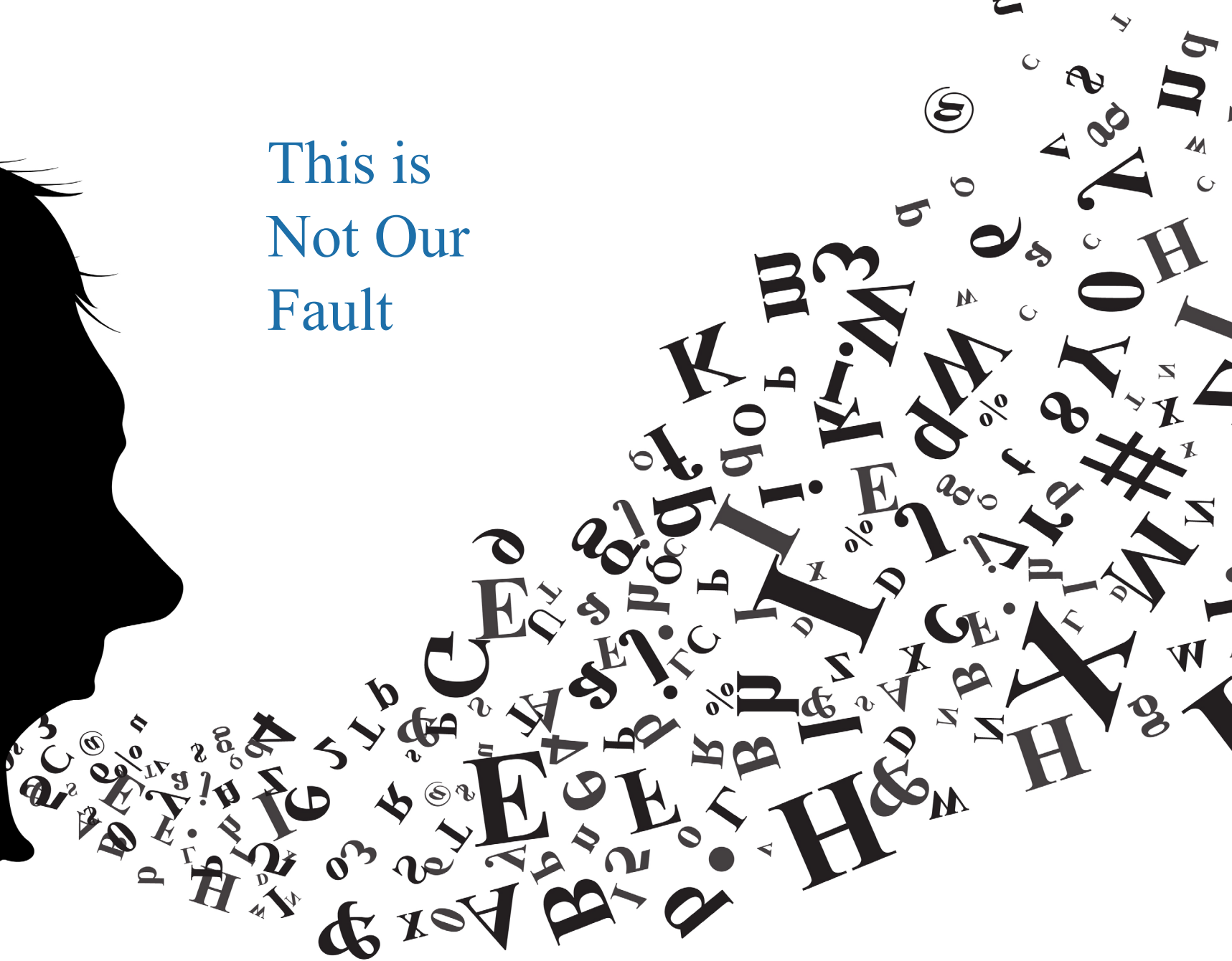
The Development of Proud & Empowered

- Proud and Empowered (10 Session Intervention)
 - Built alongside Q&T adolescents (2012-2022)
 - Life History Interviews to identify broad stressors (Zumberge Foundation)
 - Psychometric measurement to refine domains (R21HD082813)
 - Prospective study to establish temporality (R01MD012252)
 - **Feasibility Study (R21MD013971)**



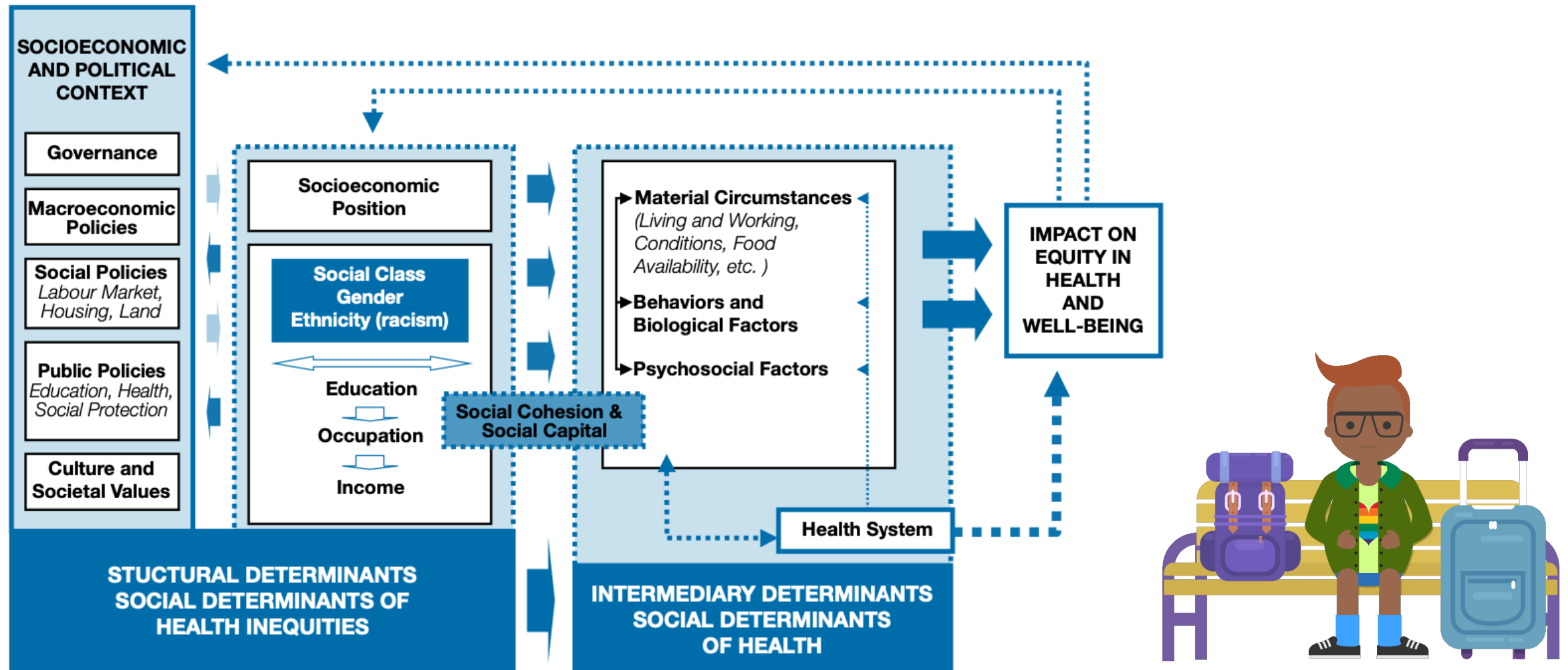


This is
Not Our
Fault



#1 - Health Disparities Do Not Operate in a Vacuum

Figure A. Final form of the CSDH conceptual framework

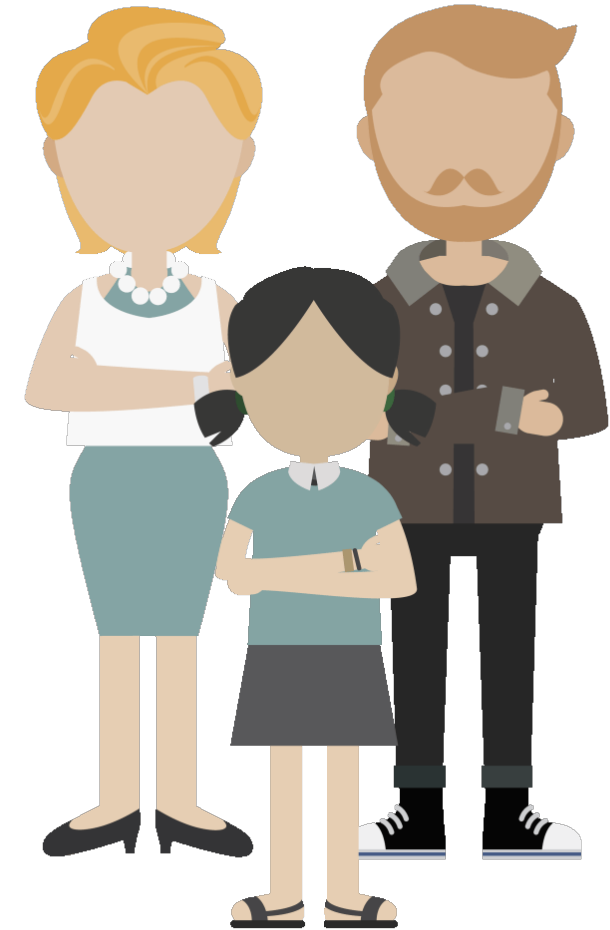
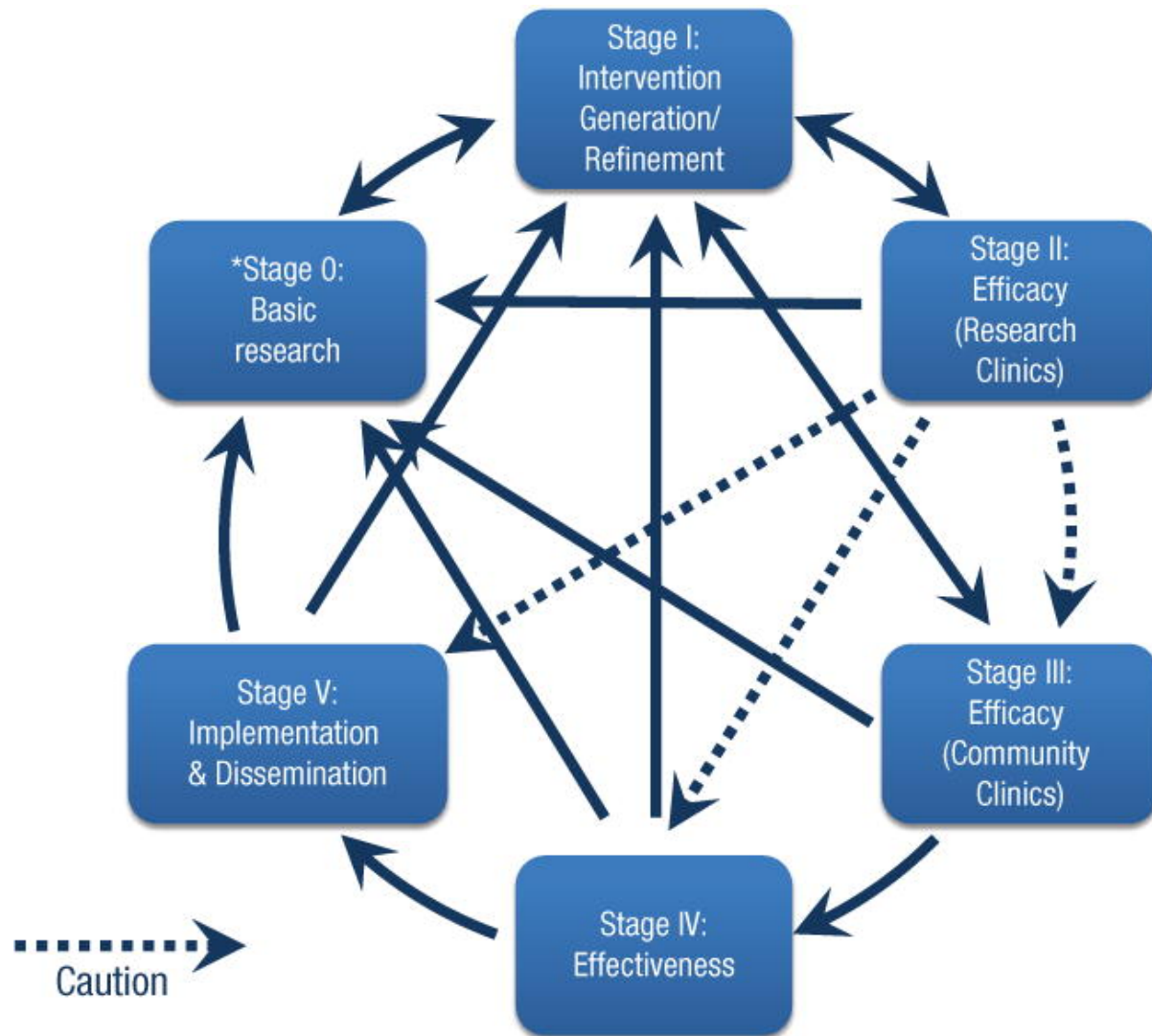


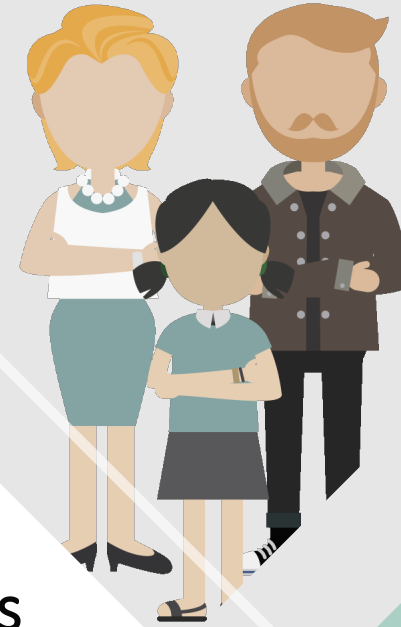
The Development of Proud & Empowered

- Proud and Empowered (10 Sessions)
 - Built alongside Q&T adolescents (2012-2022)
 - Life History Interviews to identify broad stressors (Zumberge Foundation)
 - Psychometric measurement to refine domains (R21HD082813)
 - Prospective study to establish temporality (R01MD012252)
 - Feasibility Study (R21MD013971)
- Make Space! (4 session)
 - Community organizing training of Q&T youth + allies
 - Social Action through spring semester
- **Current Efficacy Trial (R01MD016082, year 2)**



#2 - Balancing the Rules with Community Dictated Adaptations





Individuals, Families,
Schools and Communities
are Complex

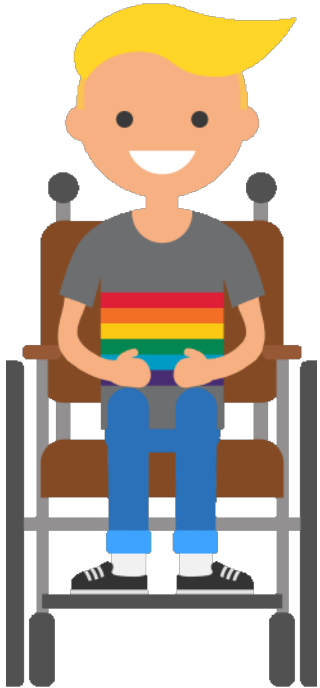


Consolidated Framework for Implementation Research (CFIR)

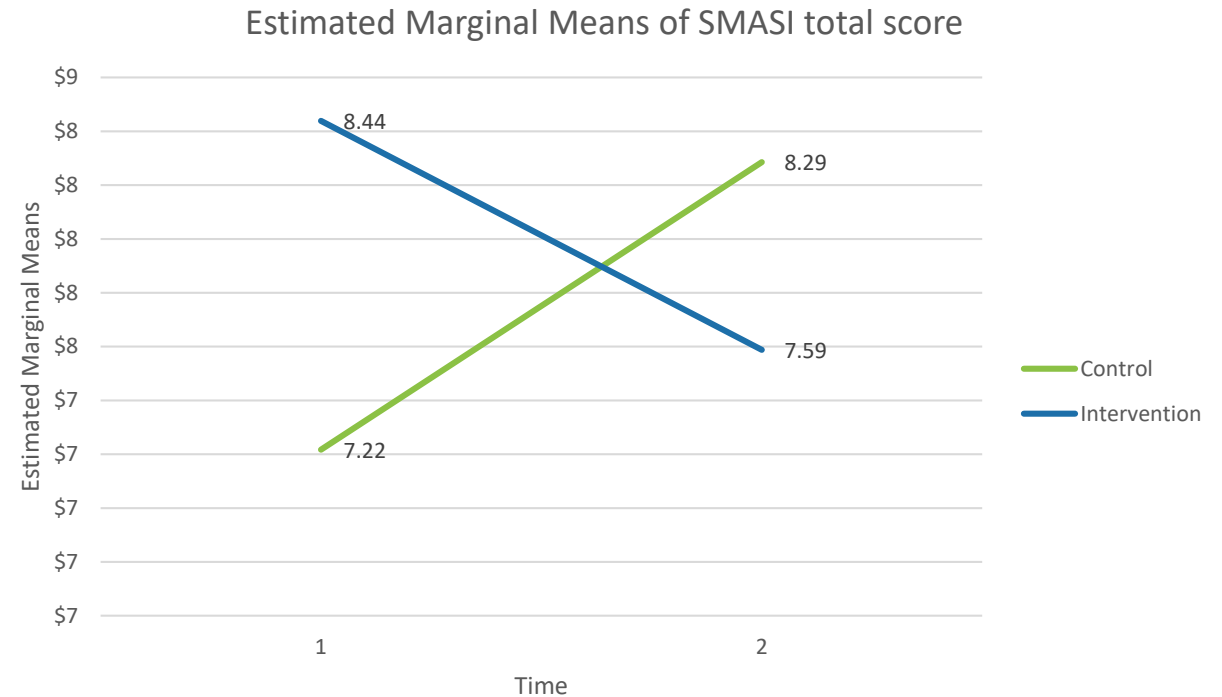


Best, et al. (2021). Learning from scaling up ultra-rapid genomic testing for critically ill children to a national level. *Genomic Medicine*, 6 (5). DOI: 10.1038/s41525-020-00168-3¹²

#3 – Balancing Risk & Protective Factors



- Intervention condition showed a decrease in minority stress (**including environmental stressors**) over time, compared to control
- Health outcomes anxiety and depressive symptoms also showed decrease in the intervention condition over time when compared to control, **even in the presence of stressors**



Thank You!



jgoldbach@wustl.edu