

UCSF Center for Vulnerable Populations
Zuckerberg San Francisco General Hospital

How social policies shape the health and well-being of sexual- and gender-minority youth

Morgan Philbin, PhD, MHS
Associate Professor
Department of Medicine
University of California San Francisco
[@morgan_philbin](https://twitter.com/morgan_philbin)



Why Study Structural Factors and SGM youth health?

- Structural factors are deployed as symbolic markers of belonging and inclusion
- Direct and large-scale impact on the public's health
- Multi-level and multi-sector
- Modifiable through sustained and collective action



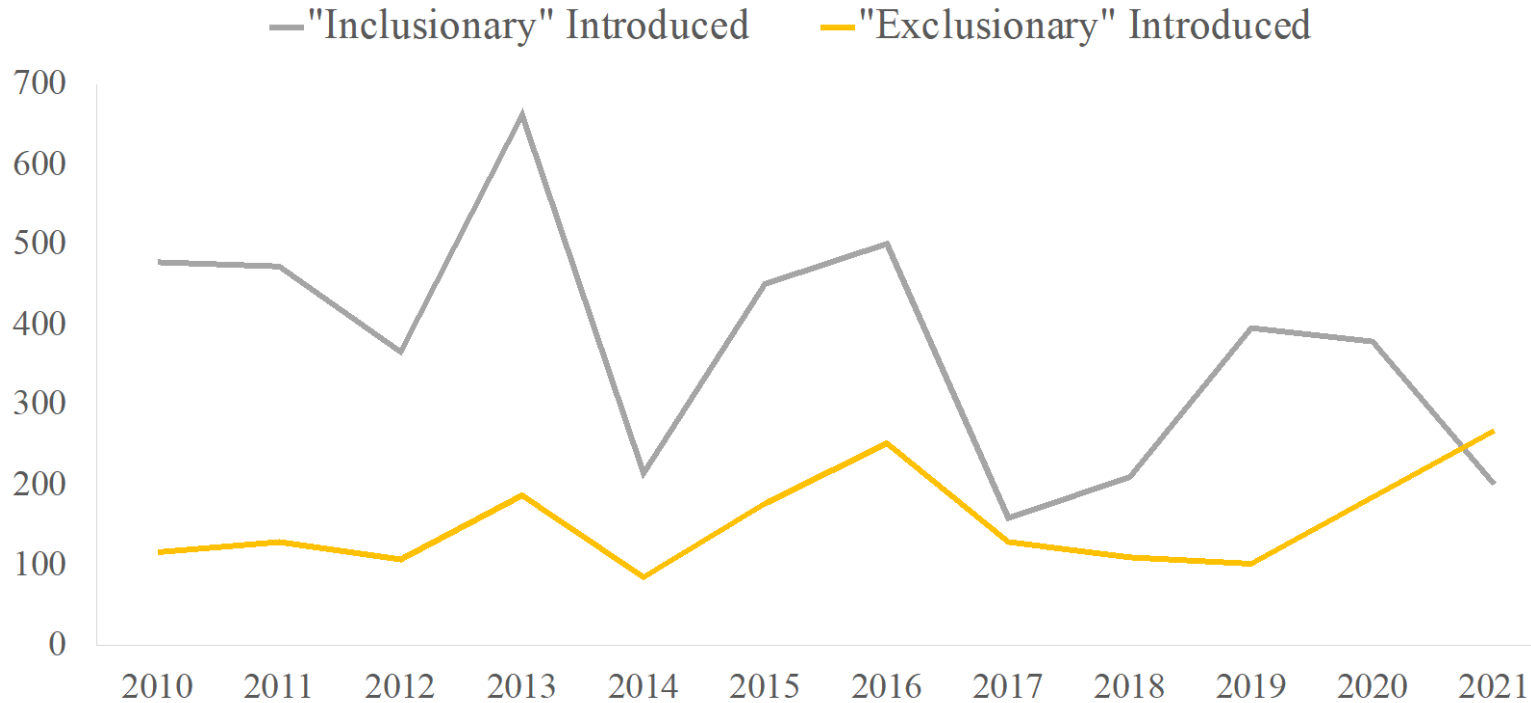
Structural factors can affect SGM health in many ways

SGM specific policies

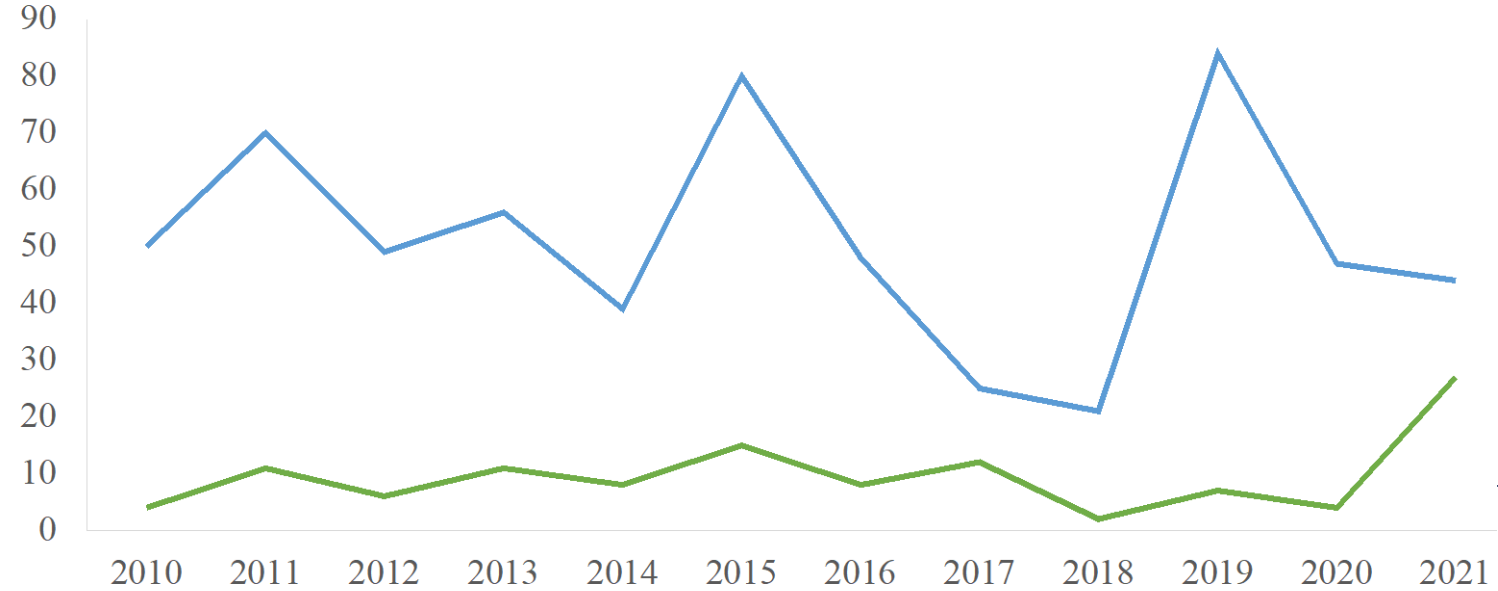
SGM policy climates

Universal policies

State-level SGM policies introduced since 2010



— "Inclusionary" Passed — "Exclusionary" Passed



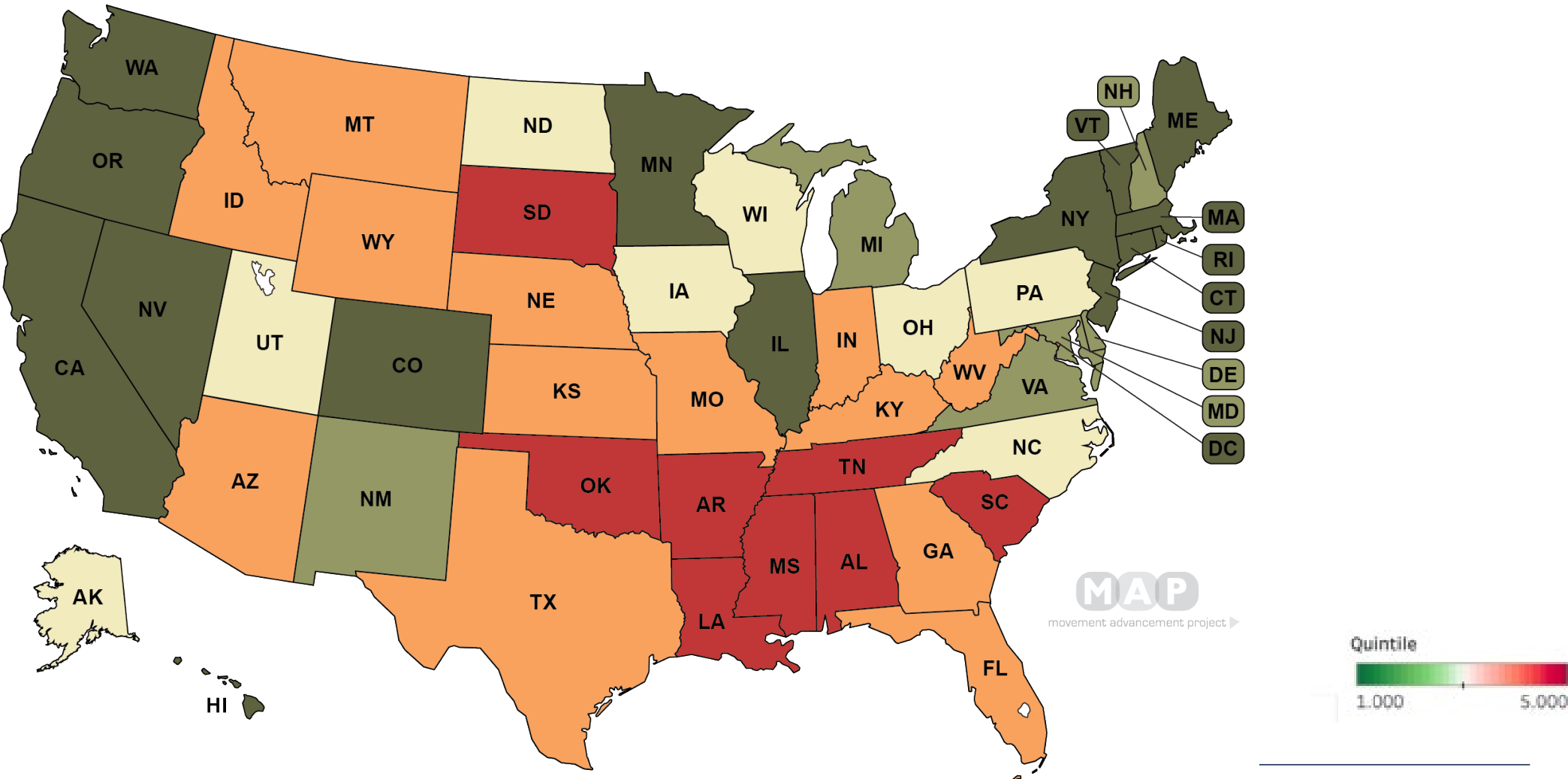
State-level SGM policies passed since 2010

SGM policies and health for SGM young people

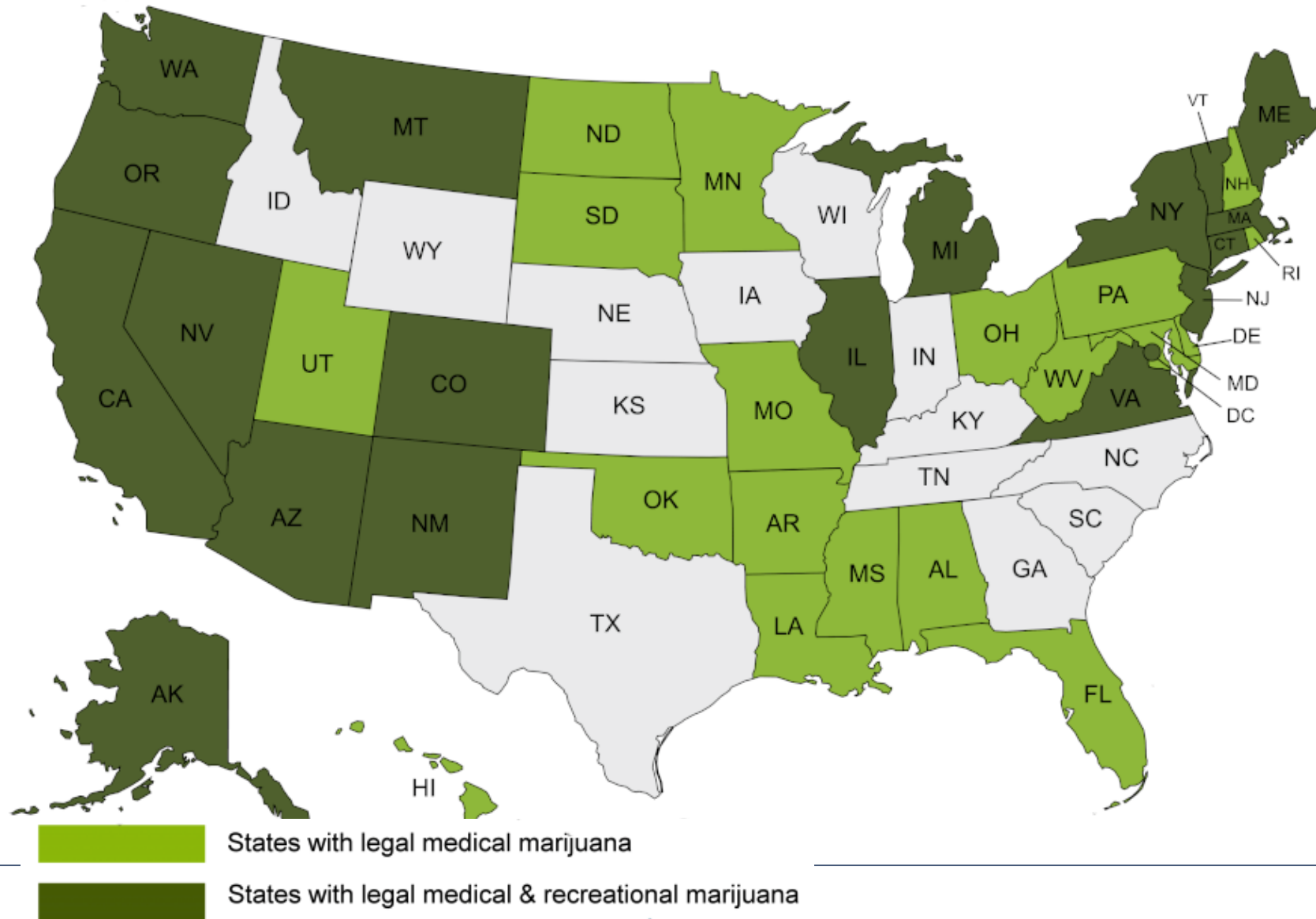
- Mental Health
- Substance use
- Physical wellbeing



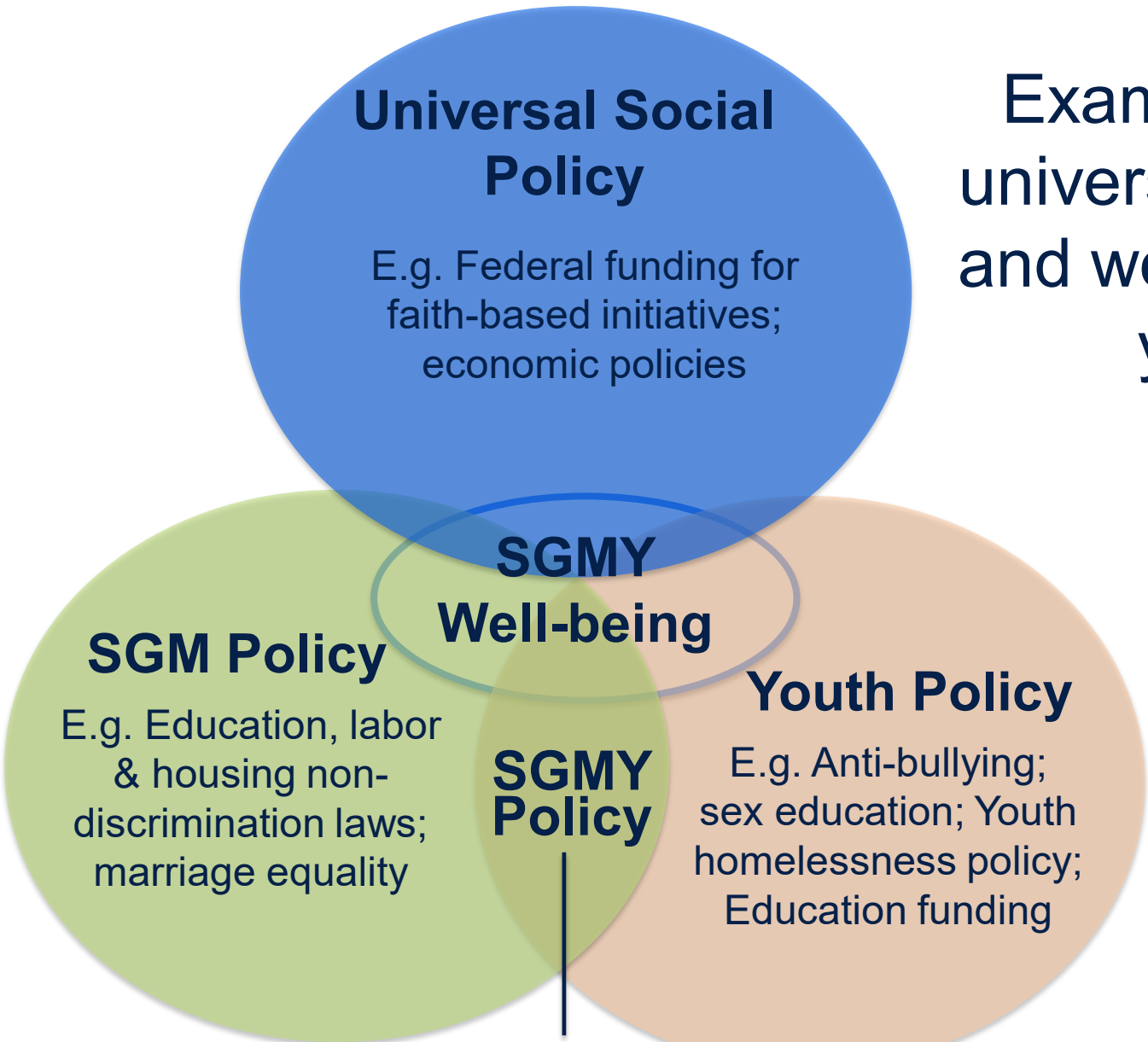
SGM-related policy climates



Differential and spillover impacts of social policies



Examples of how targeted and universal policies affect the health and well-being of SGM youth and young adults (SGMY)



Universal Social Policy

E.g. Federal funding for faith-based initiatives; economic policies

SGM Policy

E.g. Education, labor & housing non-discrimination laws; marriage equality

SGMY Well-being

SGMY Policy

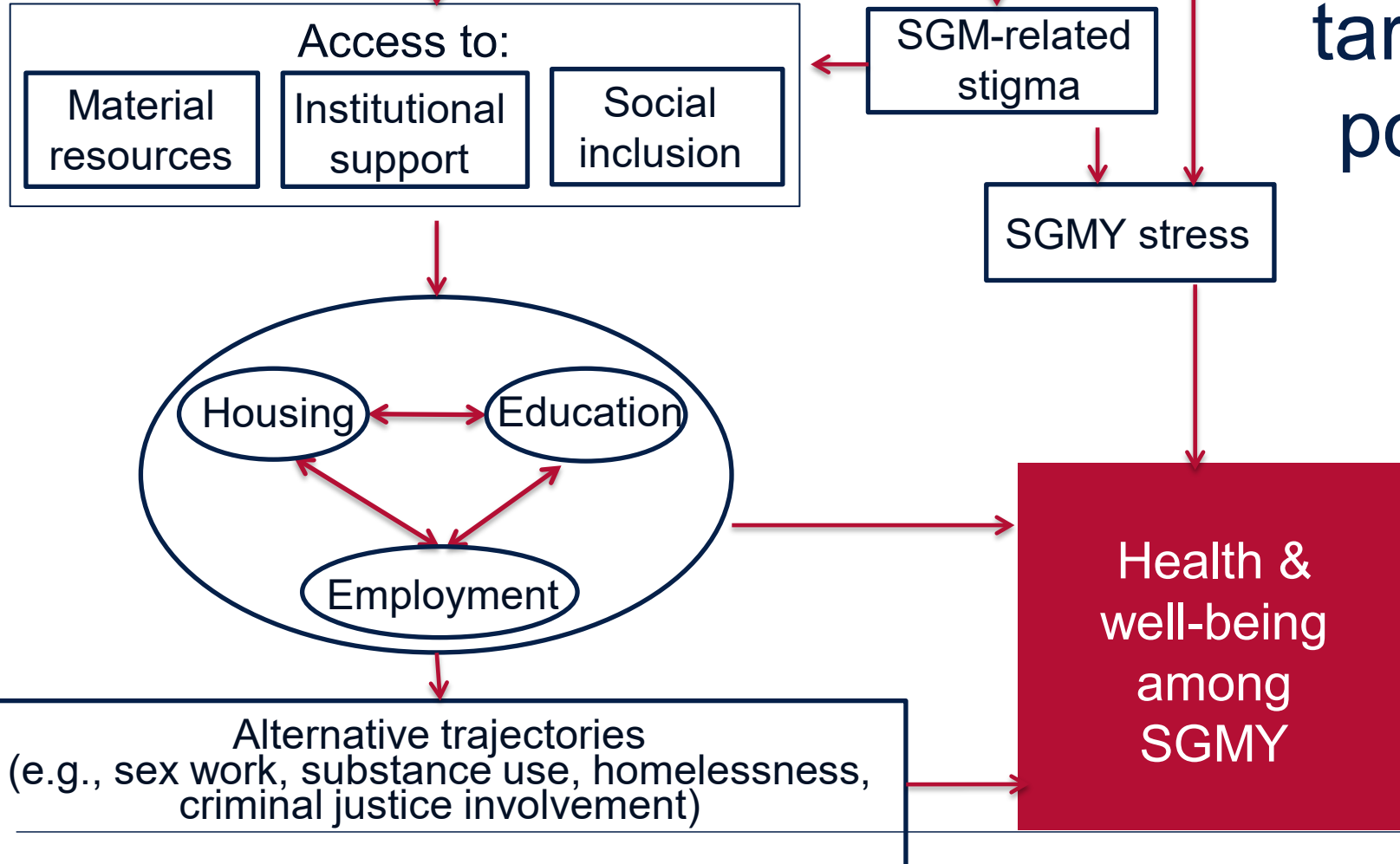
E.g. transgender individuals and sports; SGM-targeted education bills; bathroom laws; gender-affirming care

Youth Policy

E.g. Anti-bullying; sex education; Youth homelessness policy; Education funding

Targeted and universal policies that affect SGMY

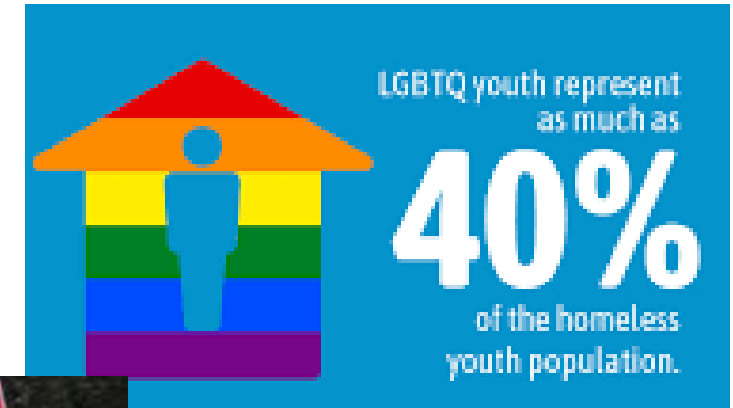
Exploring how targeted and universal policies affect SGMY



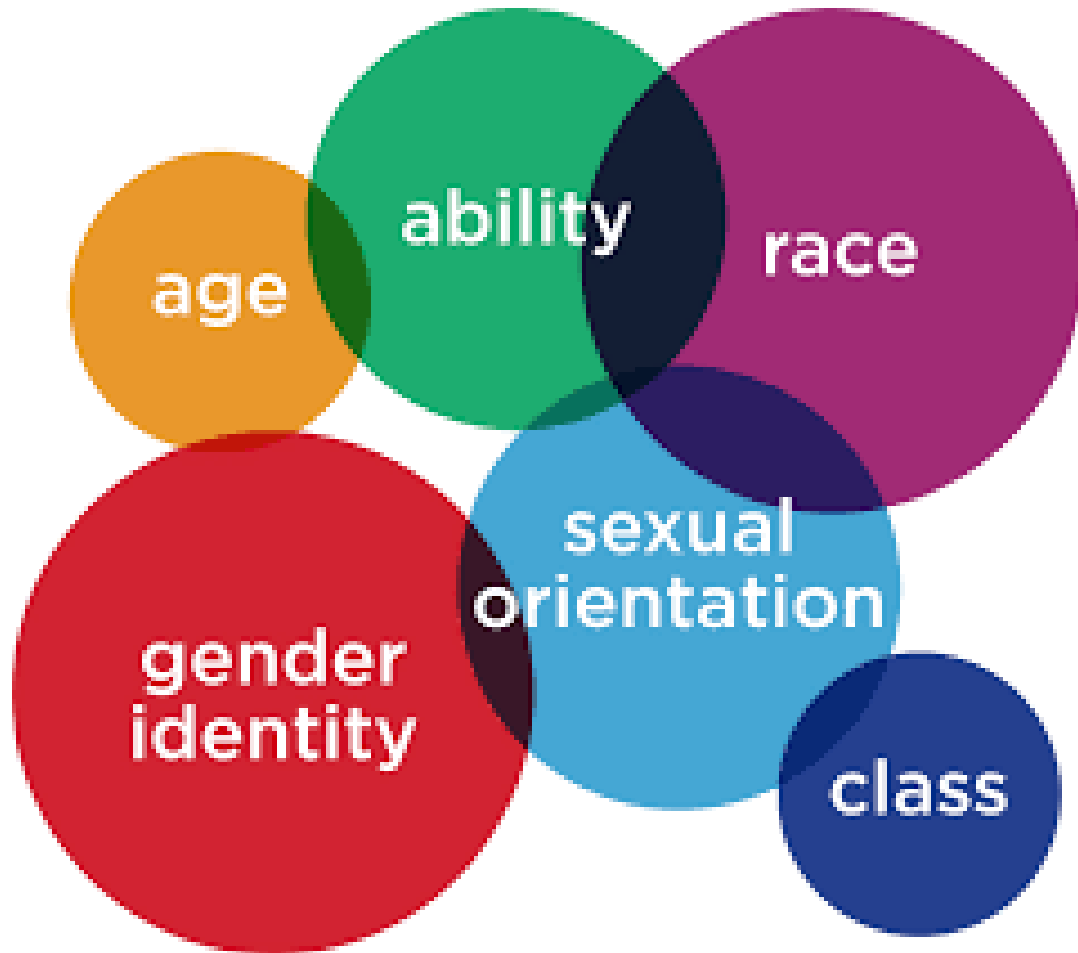
Shelter policies and SGM Youth

“When I saw the shelter policies they’re not good towards youth...I feel like youth shelters should have a higher age range.

– 21 y/o, bisexual male




Intersecting policy climates and SGM health



DEMOGRAPHY

ISSUES

RESEARCH ARTICLE | FEBRUARY 01 2022

Structural Heteropatriarchy and Birth Outcomes in the United States 

Bethany G. Everett; Aubrey Limburg; Patricia Homan; Morgan M. Philbin

Demography (2022) 59 (1): 89–110.

<https://doi.org/10.1215/00703370-9606030>

SGM-related policies: Research Challenges



Measurement



Outcomes and data sets



Mixed-Methods Work



Future Directions

- Broaden scope of inquiry
- Expand intersectional approaches
- Focus on implementation and enforcement
- Continued work in U.S. and international contexts

THANK YOU!!!

Morgan.Philbin@ucsf.edu; @morgan_philbin

Funding: K01DA039804A, 3R01DA037866-05S2 and the Columbia University Junior Faculty Diversity Grants Program.

I want to say a huge thank you to the co-authors on the projects that I discussed today: Bethany Everett, Aubrey Limburg, Patricia Homan, Pia Mauro, Silvia Martins, Natalie Levy, Emily Greene, Adrian Guta, Heather Wurtz, Tara McCrimmon, Patricia Homan, Erin Kelly, Gregory Phillips, Daniel Feaster, Krystal Wang, and Natalie LaBossier.